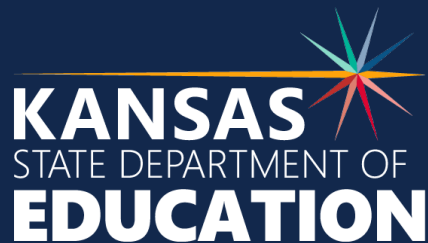


Kansas Education Data System (KEDS)

The Beginning of Student Data Modernization



Kansas State Department of Education | www.ksde.gov

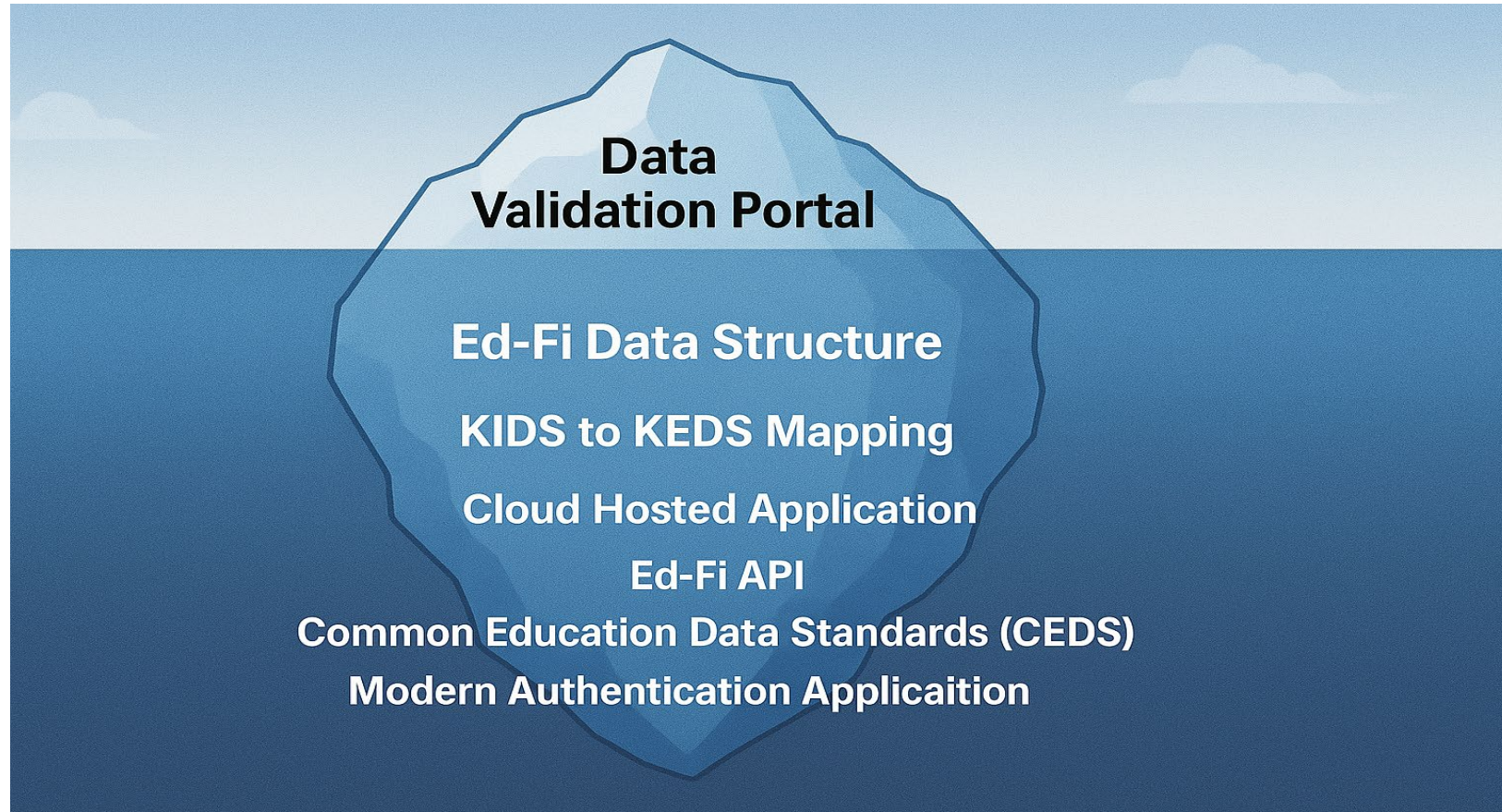
Kansas leads the world in the success of each student.

Ed-Fi

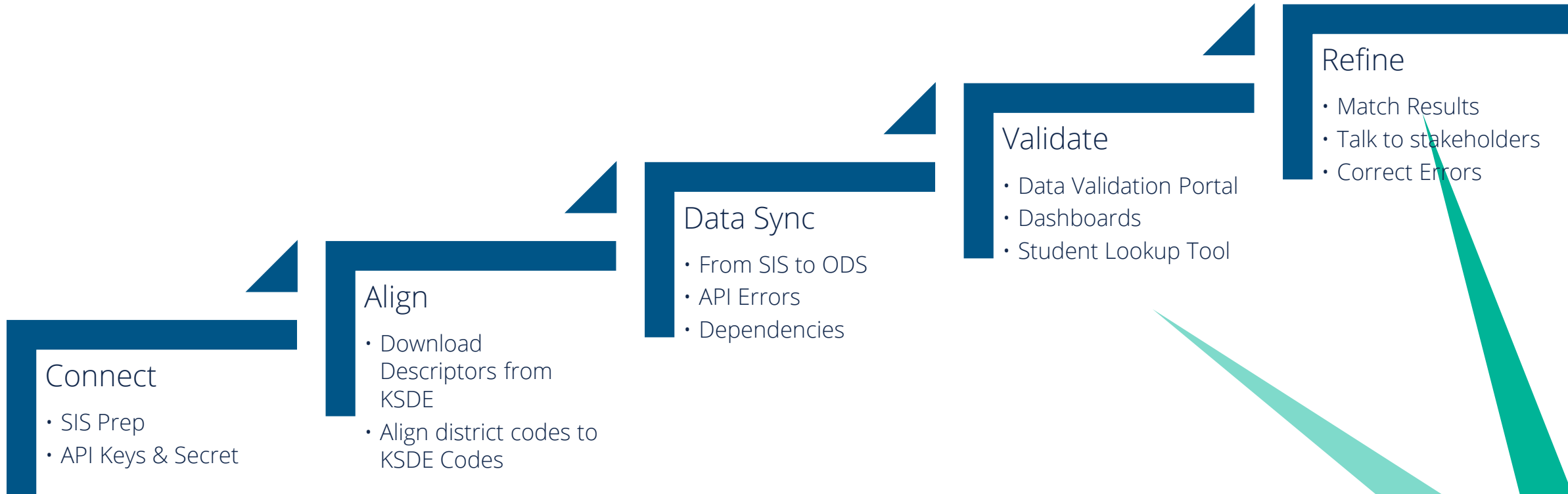
The Ed-Fi Data Standard is a community-led, open-source, CEDS-aligned, and widely adopted standard. The Ed-Fi Data Standard focuses on the kindergarten through 12th grade (K-12) enterprise data model and has limited coverage of early learning, post secondary, and other data domains. The Ed-Fi Alliance has released technology assets, including a RESTful Application Programming Interface (REST API), the Ed-Fi API, and an Operational Data Store (ODS) that supports real-time integration and organization of commonly shared K-12 data from disparate source systems in a school district, other local education agency (LEA), or state education agency (SEA). For example, data from a SIS, a Learning Management System, local assessments, state assessments, a special education system, and other systems can be brought together into a unifying, open data model for operational and analytical use cases. This can be done in an automated, real-time manner if the systems support the Ed-Fi API. In this way, as changes occur in the source systems, the changes are reflected in Ed-Fi API calls and applied real-time to the Ed-Fi ODS.



Project Scope



The Process



Onboarding

Connect

- SIS Prep
- API Keys & Secret

Align

- Download Descriptors from KSDE
- Align district codes to KSDE Codes

Data Sync

- From SIS to ODS
- API Errors
- Dependencies

Reporting

Validate

- Data Validation Portal
- Dashboards
- Student Lookup Tool

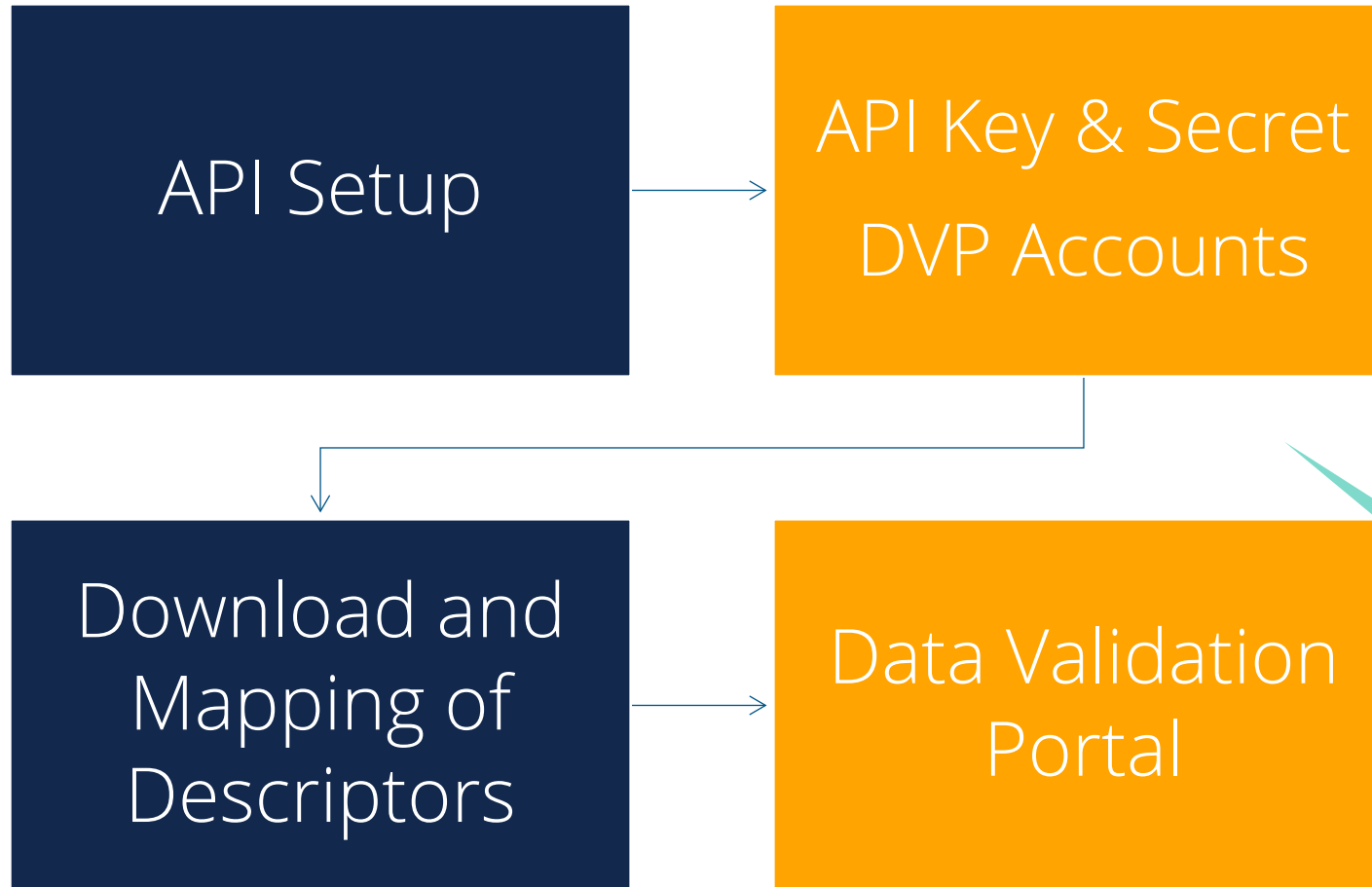
Refine

- Match Results
- Talk to stakeholders
- Correct Errors

Onboarding Information

- SIS Preparation – Information and training should be provided by your SIS
- Connect your SIS to KEDS
 - Scheduled via Microsoft Bookings on KEDX website
- DVP Accounts
 - Form sent to and approved by Superintendent
- Download and Align Descriptors
- Data Validation Portal (DVP) Training
 - <https://kedx.ksde.gov>
 - <https://learning.ksde.org>

Onboarding



Reporting

Data Sync

- From SIS to ODS
- Dependencies
- API Errors

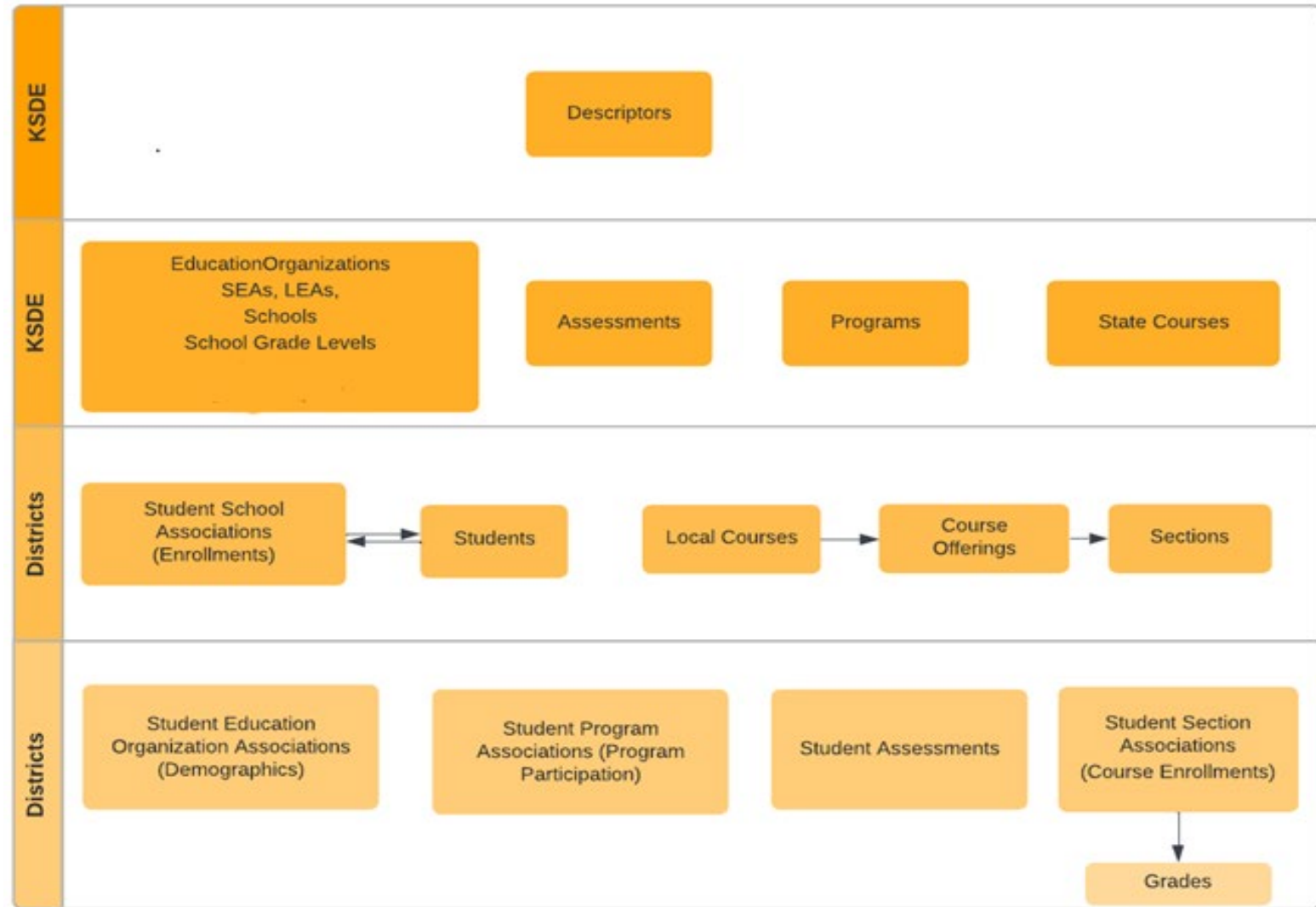
Validate

- Data Validation Portal
- Dashboards
- Student Lookup Tool

Refine

- Match Results
- Talk to stakeholders
- Correct Errors

Data Sync



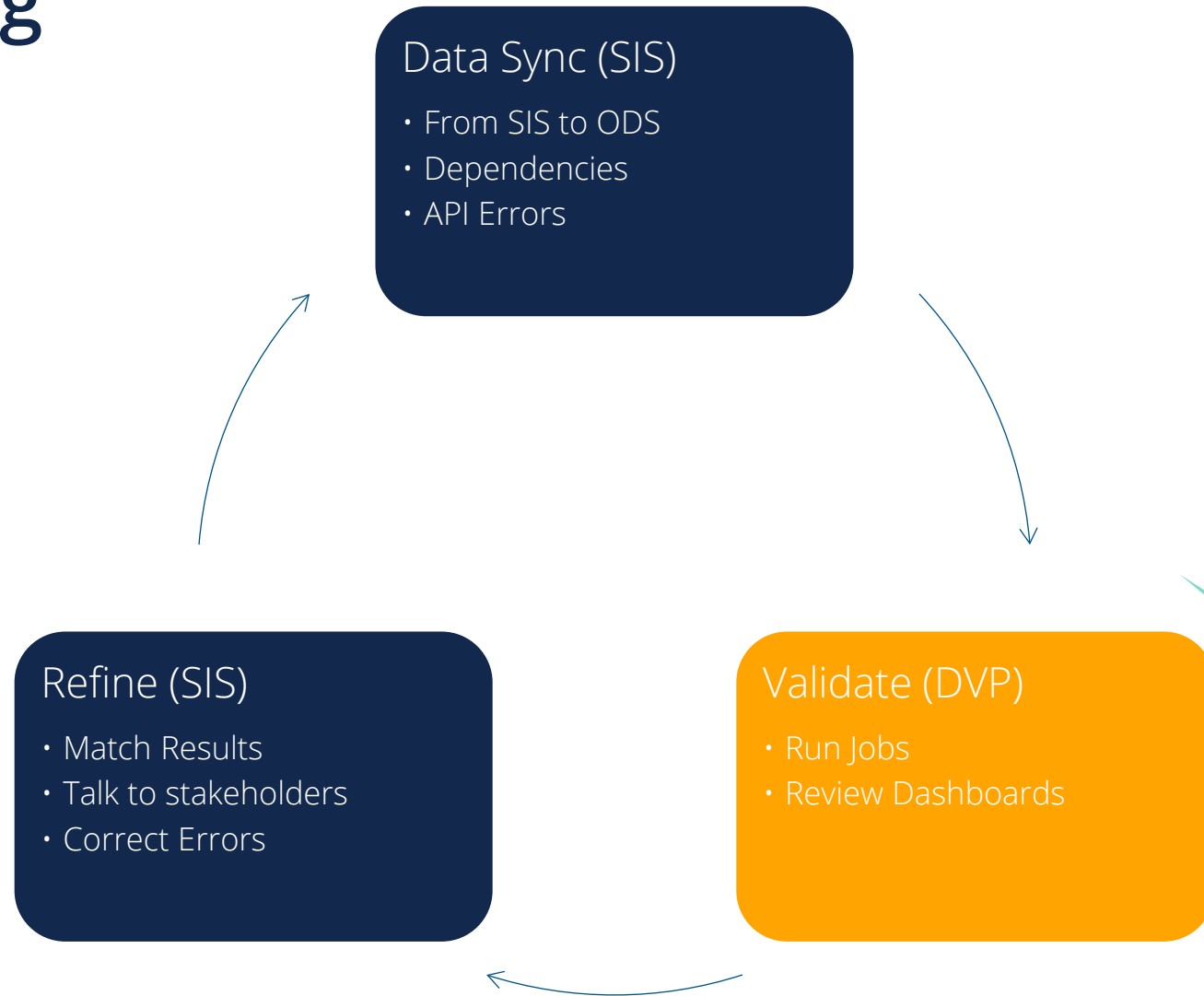
- From SIS to ODS
- API Errors
- Dependencies
- Collections Windows

Validate & Refine

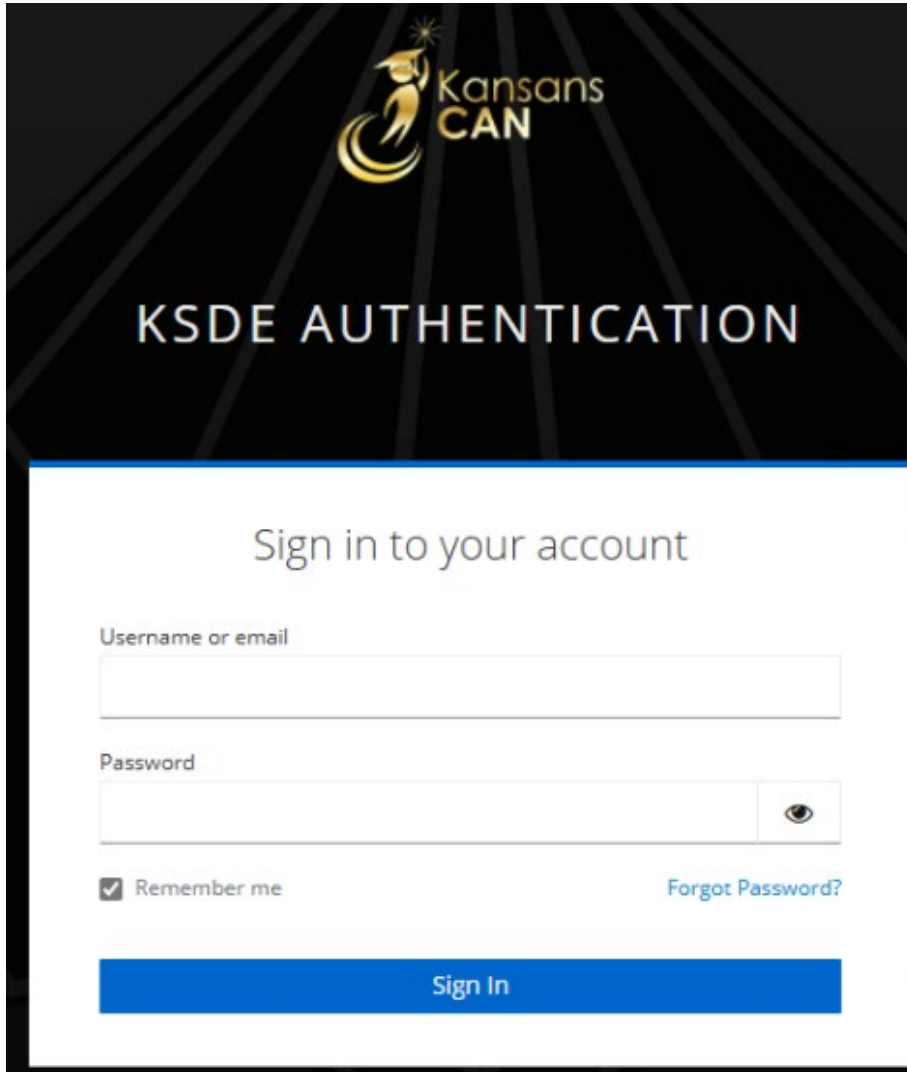
- Compare Results
- Talk to stakeholders
- Correct Errors



Reporting



Authentication


The image shows a login interface for KSDE. At the top, there is a logo for 'Kansans CAN' featuring a stylized figure holding a torch. Below the logo, the text 'KSDE AUTHENTICATION' is displayed in a large, bold, sans-serif font. Underneath this, the instruction 'Sign in to your account' is centered. The form contains two input fields: 'Username or email' and 'Password'. The 'Password' field has a toggle icon (an eye) to its right. Below the 'Username or email' field, there is a checkbox labeled 'Remember me' and a link labeled 'Forgot Password?'. At the bottom of the form, there is a blue button labeled 'Sign In'.

Modern Authentication Application

- Currently Manual Setup
- Accounts based on email addresses
- Future
 - Self Registration
 - Multiple Roles per account
 - Explore implementing Multi-Factor Authentication (MFA)

Data Validation Portal

- Validate submitted data
- Dashboards
- Student Lookup Tool



Data Validation Portal

[Log Out](#)
district_cert_u0001
VALIDATION_PORTAL_DISTRICT_DATA_CERTIFIER
District: U0001 KSDE Test Organization (310010000)

Home

Validation Jobs

District: U0001 KSDE Test Organization

School Year

All ▼

Building

▼

CERTIFY

REFRESH JOBS

Job Name	Last Run	Status	Results	Run Job
Assessment	Never	Never run	No Results	RUN JOB FOR ALL SCHOOLS IN DISTRICT

Jobs and Rules

- Jobs are a collection of rules
- Grouped by elements (Assessment, ESOL, Course, etc.)
- Rules were transferred from KIDS
- Jobs/rules will be refined during parallel year

Job Name	Last Run	Status	Results	Run Job
Assessment	3/19/2025, 1:13:21 PM	ⓘ Records found	View Results	<button>RUN JOB</button>
Buildings	3/19/2025, 1:13:23 PM	✓ All records passed validation	View Results	<button>RUN JOB</button>

Job Summary

Job Status	Violations
Job Name	Assessment
Job Date	3/19/2025, 1:13:21 PM

Rule	Type	Description	Records Found	View Details
KC_21	1-ERROR	If the KCC_ID field contains a value of 'F', 'C', 'L' or 'X' then the value of 'Student is a Single Parent' is required in the StudentType field.	0	
KC_23	1-ERROR	If KCC_ID contains a value other than 'Certificate' or 'Migrant Services' then WorkBasedLearning must contain a value.	0	
KC_9	1-ERROR	In order to have a value of 'Student is a Single Parent' in the StudentType field. The KCC_ID field must contain a value of 'F', 'C', 'L' or 'X'.	0	
ST_16	1-ERROR	LetterGradeEarned is required if CourseStatus has the values of 'Completed (Pass)', 'Completed (Fail)' or 'Exited before course completion (Migrant Only)'	1	Details

Task List

Listing of records that met the criteria for the business rule

Type	Rule	Description	Records Found	Records Displayed
1- ERROR	ASSESS_2ab	GradeLevels (Third grade - Eighth grade, Tenth grade) are the only valid GradeLevels that can have the values 'State Mathematics Assessment' or 'State English Language Arts Assessment' in the AssessmentIdentifier field.	1	1

StateStudentId	DistrictId	SchoolId	AssessmentIdentifier	GradeLevel	RuleComponent
6424187685	310010000	310019984	State Mathematics Assessment	Eleventh grade	State Mathematics and ELA Assessments are not available for this grade level.

EXPORT TO CSV

State Student Id
9668168542

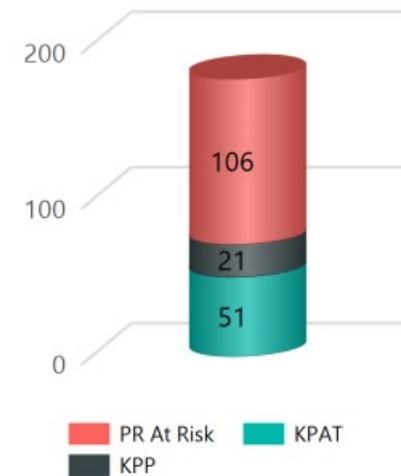
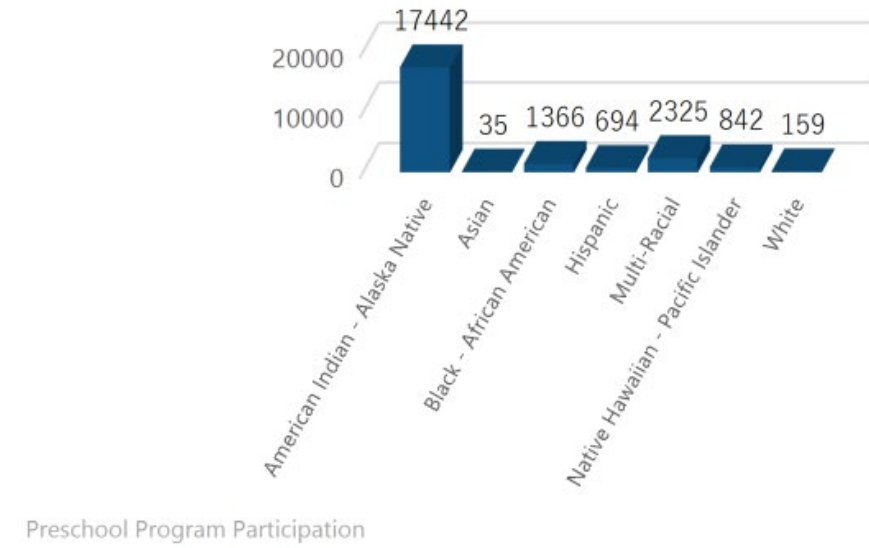
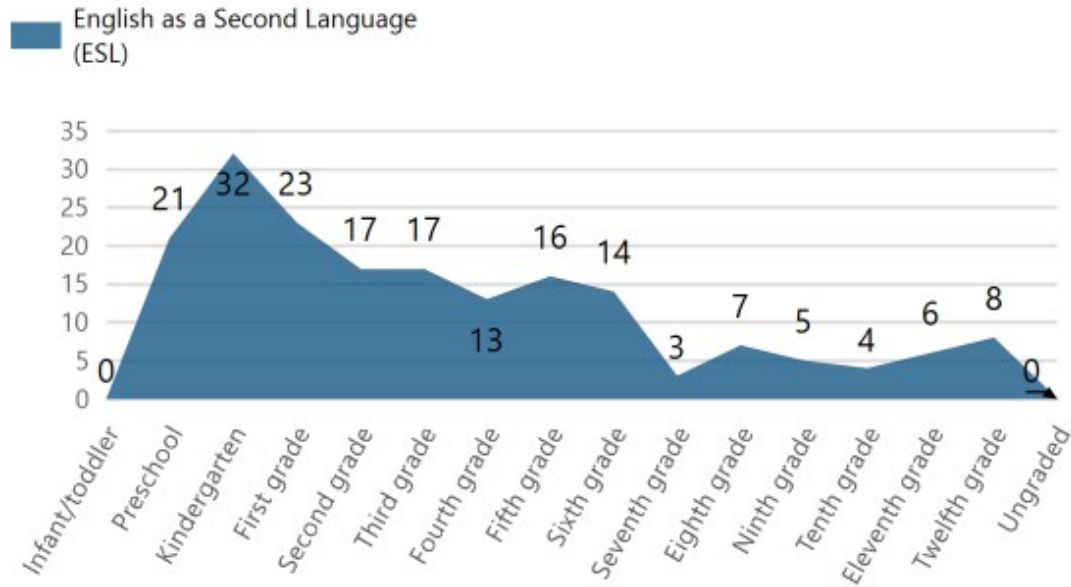
LOOK UP STUDENT DATA

Student Lookup Tool

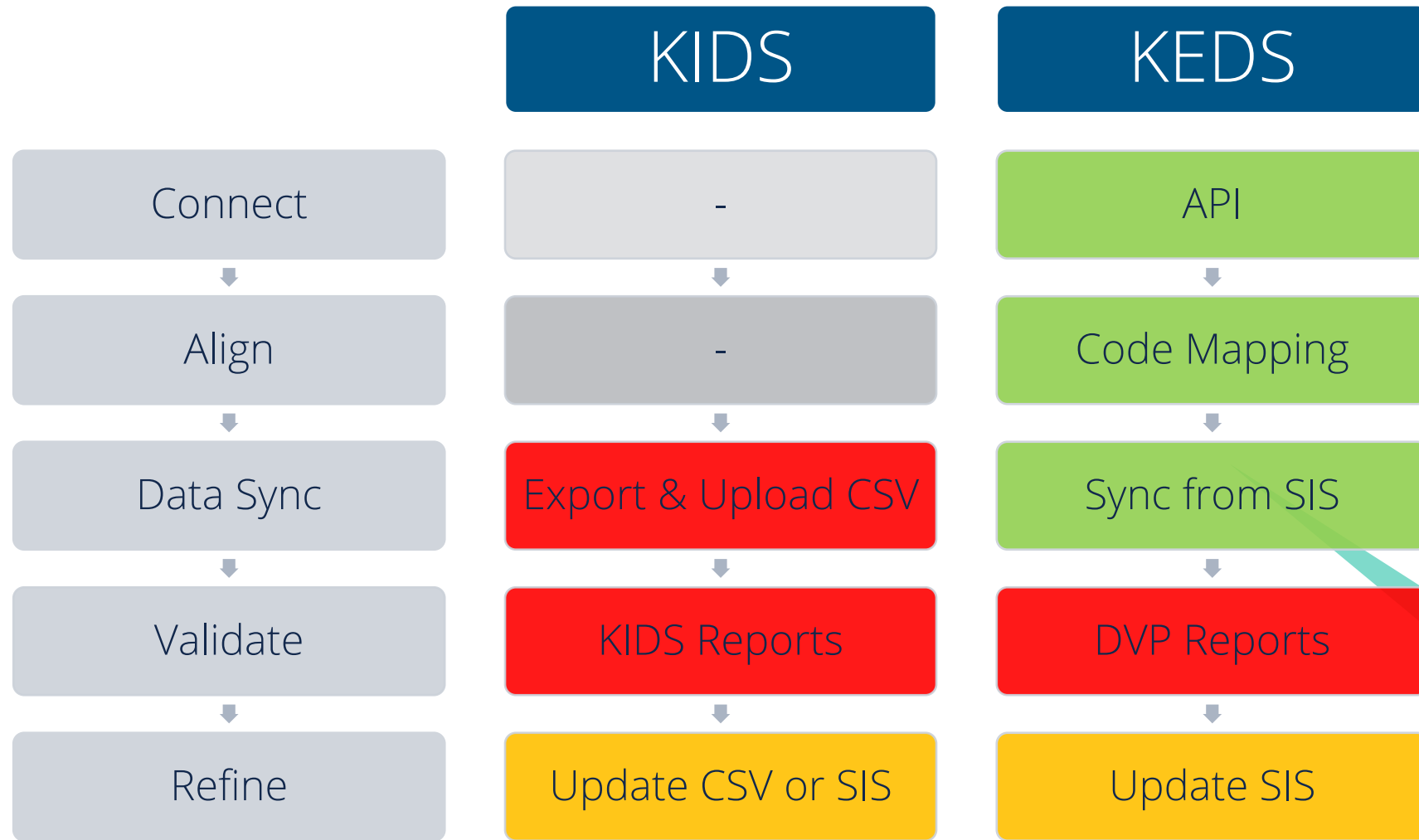
Student Data

State Student Identifier	9668168542	Accountability School Identifier	9982 KSDE Test Elementary
ESOL/Bilingual Program Entry Date	2023-08-16	ESOL/Bilingual Program Code	Both Title III and State ESOL/Bilingual Funded
First Language	Spanish	Gifted Student Indicator	No
Current Grade Level	Third grade	Homeless Student	No
Immigrant Student	No	Kansas At-Risk Program Participant	No
Eligibility for NSLP/At-Risk Funding	Free Lunch- Direct Certification	Most Recent School	9982 KSDE Test Elementary
Neglected Student	No	Primary Disability Indicator	No
QualifiedFor504	No	District of Residence	KSDE Test Organization
School Entry Date	2024-08-15	Title I Participant	No
Cumulative Number of Days Attended	51		

Dashboards



Work Comparison



Timeline

Spring 2025

- Transition from pilot to parallel
- Data collection planned changes
 - Ed-Fi extension changes
 - 25-26 Sandboxes made available to SIS Vendors
- Onboard more districts
- Provide training
- Refine support processes
- Districts validate data through DVP

Summer 2025

- Vendors release 25-26 updates
- Onboard remaining districts
- Expand dashboards in DVP
- Start of full parallel year
 - KIDS will remain the system of truth for the school year

Resources



Kansas Education Data System Scheduling

✓ SELECT A SERVICE

KEDS PowerSchool Onboarding ☐

Schedule a time to link your district student... [Read more](#)

15 minutes

KEDS Data Validation Portal Review ☐

Schedule a time to review the KSDE Data V... [Read more](#)

1 hour

KEDS Private School Onboarding ☐

Schedule a time to link your private school ... [Read more](#)

30 minutes

KEDS District Onboarding ☒

Schedule a time to link your district student... [Read more](#)

30 minutes

Kansas Education Data Exchange (KED-X)

The mission of the Kansas State Department of Education (KSDE) is to support all Kansas school districts in collecting and reporting data to fulfill the Kansas State Board of Education's (KSBE) mission to prepare Kansas students for lifelong success through rigorous, quality academic instruction, career training and character development according to each student's gifts and talents. Specifically, KSDE believes a successful Kansas high school graduate has the academic preparation, cognitive preparation, technical skills, employability skills and civic engagement to be successful in postsecondary education, in the attainment of an industry recognized certification or in the workforce, without the need for remediation.

Contact Us

Questions or Comments

keds@ksde.gov

- Visit our website <https://kedx.ksde.gov>
- Email us at keds@ksde.gov
- Data Validation Portal Review Sessions



Christopher Fletcher
Information Systems Manager
IT
(785) 296-1067
christopher.fletcher@ksde.gov

Julie Cook
Information Systems Manager
IT
(785) 296-3300
julie.cook@ksde.gov

Jennifer Shaffer
Assistant Director
IT
(785) 296-5240
jennifer.shaffer@ksde.gov

The Kansas State Department of Education does not discriminate on the basis of race, color, religion, national origin, sex, disability or age in its programs and activities and provides equal access to the Boy Scouts and other designated youth groups. The following person has been designated to handle inquiries regarding the nondiscrimination policies: KSDE General Counsel, Office of General Counsel, KSDE, Landon State Office Building, 900 S.W. Jackson, Suite 102, Topeka, KS 66612, (785) 296-3201.

