



# **KSDE Mapping/Translation of KIDS Collections to Ed-Fi ODS 2026 Technical Specifications**

August 20, 2025

This document describes the technical specifications and definitions used when translating KIDS Collections elements into Ed-Fi resources.

Contents

Overview.....4

District and School IDs.....4

Student ID Validation via Integration with eScholar Uniq-ID.....5

Read-Only API Endpoints with Master Data Provided by KSDE .....5

Ed-Fi Model Dependency Graphs.....6

Descriptors .....7

I. Calendar Information .....8

    Calendar.....8

    CalendarDate .....8

II. Person Information .....9

    Student .....9

III. Staff Assignment Information .....11

    StaffEducationOrganizationAssignmentAssociation .....11

IV. Enrollment Information .....12

    StudentSchoolAssociation .....12

V. Demographic Information .....15

    StudentEducationOrganizationAssociation .....15

VI. Responsibility Relationship Information.....20

    StudentEducationOrganizationResponsibilityAssociation .....21

VII. Program Information.....23

    StudentLanguageInstructionProgramAssociation (English as a Second Language (ESL) .....23

    StudentHomelessProgramAssociation (Homeless) .....24

    StudentSchoolFoodServiceProgramAssociation (Student School Food Service) .....26

Title I Part A.....	27
Kansas Parents as Teachers Program.....	29
Kansas Pre-K Pilot Program.....	30
VIII. Student Attendance Information.....	31
StudentSchoolAttendanceEvents.....	31
IX. Session and Grading Period Information.....	32
AcademicWeek (Resource is optional).....	32
Session.....	32
Grading Period.....	33
X. Course, Course Offering, Section, Student Section Association, and Grade Information.....	35
CourseOffering.....	36
Section.....	38
StudentSectionAssociation.....	40
StaffSectionAssociation.....	41
SectionEducator.....	42
Grade.....	44
XI. Assessment Information.....	47
Assessment.....	47
ObjectiveAssessment.....	48
StudentAssessment.....	49
XII. Student Academic Record.....	54
StudentAcademicRecord.....	54

# Overview

This document describes the methods and rules used when reading the Ed-Fi Operational Data Stores (ODSs) for use in the Kansas Education Data System (KEDS). The ODSs are a set of databases; each limited to data collected in a specific school year. The translation into the KEDS format for the 2026 school year is described here in eight general sections.

- I. Calendar Information
- II. Person Information
- III. Staff Assignment Information
- IV. Enrollment Information
- V. Demographic Information
- VI. Responsibility Relationship Information
- VII. Program Information
- VIII. Session and Grading Period Information
- IX. Course, Course Offering, Section, Student Section Association and Grade Information
- X. Assessment Information

The term 'table' is used loosely in the following sections. It represents the various sets of information that are linked together in a logical fashion. They are shown as rows and columns of data in the examples following. Where applicable, default values are shown in the examples where an Ed-Fi element may be missing.

## District and School IDs

The KSDE educationOrganizationID is formatted as follows: *ttddd bbbb*, where:

- tt = corresponds to the letter alphabet that starts the organization number.
  - A = 11
  - C = 13
  - D = 14
  - E = 15
  - I = 19
  - J = 20
  - M = 23
  - P = 26
  - S = 29
  - T = 30
  - U = 31
  - X = 34
  - Y = 35
  - Z = 36
- ddd = last 3 digits of the district number.
- bbbb = four digits of the school number, 0000 for districts

This derivation translates to the following sample org numbers and building numbers:

Org/Building Number	LocalEducationAgencyId/SchoolId	Derivation
C0038	130380000	C = 13, followed by 038 (last 3 digits) and 0000 signifying it as a district
D0101	141010000	D = 14, followed by 101 (last 3 digits) and 0000 signifying it as a district
2161	142662161	2161 is a building(school) in the district D0266 (which translates to 142660000)
2164	342552164	2164 is a building/school in the district X0255 (which translates to 342550000)

The KSDE educationOrganizationID to generic Org. No/Building No relationship value is stored in Ed-Fi on the Ed-Fi EducationOrganizationIdentificationCodes collection and is surfaced via the Ed-Fi LocalEducationAgencies, Schools, and PostSecondaryEducation resource endpoints.

## Student ID Validation via Integration with eScholar Uniq-ID

KSDE's Ed-Fi API implementation will validate Student entities through an integration with KSDE's eScholar implementation. Only Student entities that pass validation through the integration with eScholar can be submitted to the Ed-Fi API. This validation will occur automatically when a student entity is submitted via the Ed-Fi API. New students need to have a State Student ID generated through a KIDS ASGT record and stored in their SIS system before they can be submitted through the Ed-Fi API.

## Read-Only API Endpoints with Master Data Provided by KSDE

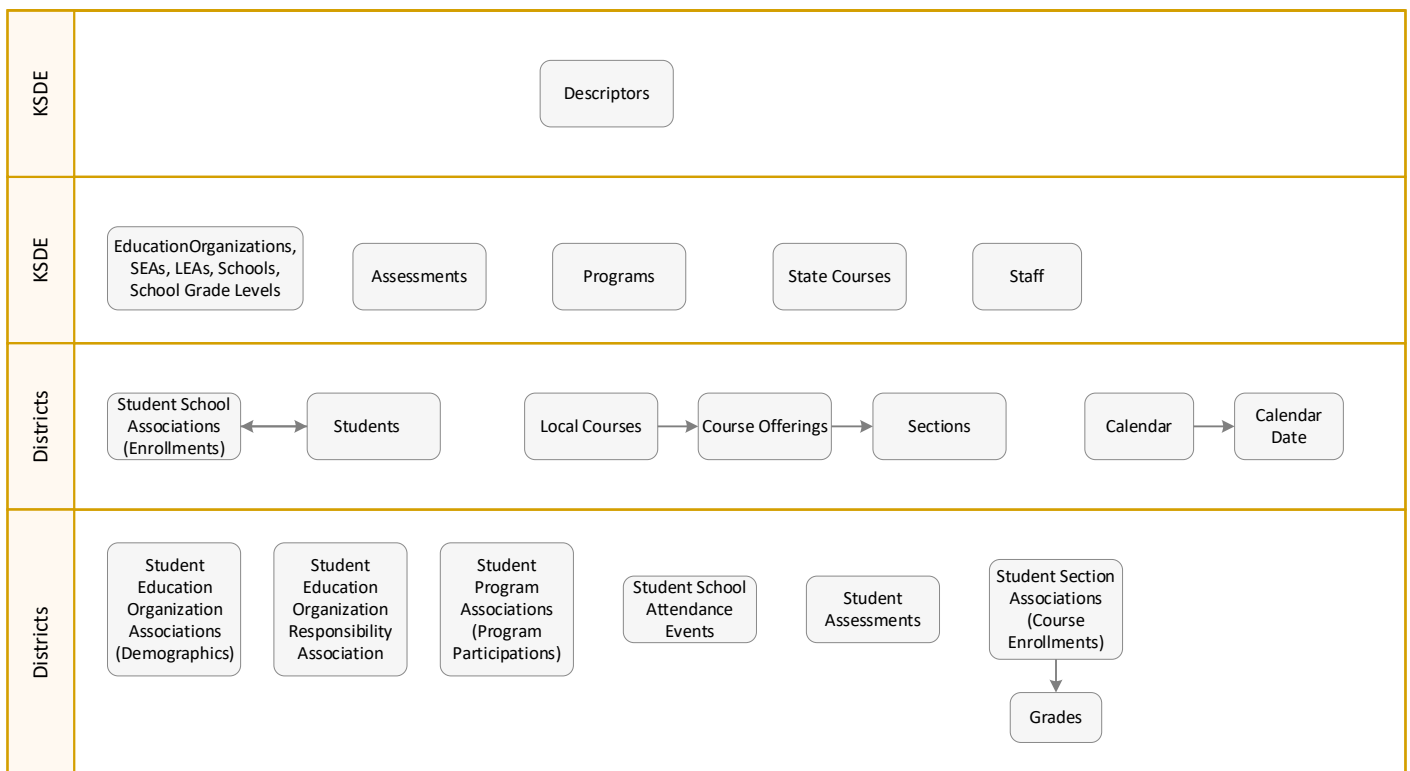
KSDE will load all the required data for the following resources within the ODS as master data.

- LocalEducationAgencies
- Schools
- Course (State Level Only)
- Staff
- Program
  - English as a Second Language (ESL)
  - Homeless
  - Student School Food Service
  - Title I Part A
  - Kansas Parents as Teachers Program
  - Kansas Pre-K Pilot Program

- Assessment
- ObjectiveAssessment

## Ed-Fi Model Dependency Graphs

The graphic below describes the dependencies required to work with the KSDE Ed-Fi API as part of its KIDS collections. Essentially, the Ed-Fi API and the underlying data model (the Ed-Fi ODS) have dependencies between calls such that certain data must be loaded in a particular order. Vendors must be aware of this load order to design, develop, and test their integration, and districts should be aware of the load order to understand and troubleshoot the initial load process within their SIS product. More detail on the dependencies is provided below the graphic. Swim lanes marked as KSDE represent the load order for master data to be provided by KSDE and are displayed for contextual information only. Swim lanes marked as Districts represent the load order for data coming from each district, loaded by the district's SIS product via its integration with the KSDE Ed-Fi API implementation.



1. Descriptors must be loaded first, as all other resources contain references to descriptor values. This data is loaded by KSDE and no action is required by vendors or districts.
2. Once descriptors are loaded, Education Organization data must be loaded by KSDE. No action is required by vendors or districts.
3. Other Education Organization data - including StateEducationAgency, LocalEducationAgency, Schools, and School Grade Levels are also seeded and managed by KSDE. This data is loaded by KSDE and no action is required by vendors or districts.

4. Student enrollment data must be provided via StudentSchoolAssociation to establish a valid security claim before any other updates may be made to student records. This data is provided by districts via integration in their SIS products.
5. Once student enrollment data is loaded, student demographics may be provided via StudentEducationOrganizationAssociation. This data is provided by districts via integration in their SIS products.
6. Student Program Associations, Student Section Associations, Grades and Student Assessments can be loaded after enrollment records have been completed. This data is provided by districts via integration in their SIS products.

## Descriptors

For a complete list of the descriptors for Kansas see the **2025-26 KSDE EdFi ODS API Descriptors** document at <https://kedx.ksde.org> on the vendor tab.

# I. Calendar Information

The calendar domain represents instructional days for the school year. The calendars are submitted at the school-level and below. Each day of the school year should be submitted with an indicator of the type of scheduled or unscheduled event for that day.

## Calendar

### Ed-Fi Fields Submitted:

- CalendarCode
  - Field in KIDS
    - N/A
  - Required: Yes
- SchoolID
  - Field in KIDS
    - N/A
  - Required: Yes
- SchoolYear
  - Field in KIDS
    - N/A
  - Required: Yes
- CalendarTypeDescriptor
  - Field in KIDS
    - N/A
  - Required: Yes
  - If only sending one calendar for the school, send the CalendarTypeDescriptor ***Student Specific***.
- GradeLevelDescriptor
  - Field in KIDS
    - N/A
  - Required: Yes

## CalendarDate

### Ed-Fi Fields Submitted:

- CalendarEventDescriptor
  - Field in KIDS
    - N/A
  - Required: Yes
- Date
  - Field in KIDS
    - N/A
  - Required: Yes
- CalendarCode
  - Field in KIDS
    - N/A



- Required: Yes
- 
- SchoolID
  - Field in KIDS
    - N/A
  - Required: Yes
- SchoolYear
  - Field in KIDS
    - N/A
  - Required: Yes

## II. Person Information

A basic unit in the Ed-Fi system is the Student table. It simply holds the State Student ID and with that, a surrogate key called the Student USI. The Student USI is the key used when data is loaded into other Ed-Fi related tables such as enrollment, demographics and programs.

The Student table also requires the name, birthdate and gender of the student. However, these are only used to validate the State Student Identifier in the record. The State Student Identifier must match one in the eScholar system with an identical name, birthdate, and gender.

The Staff table is required as a dependency for TASC and KCAN record submissions via Ed-Fi. Currently, the fields required are the eScholar-assigned State Educator ID as the StaffUniquelid. The Staff resource will be seeded and maintained by KSDE.

### Student

#### Ed-Fi Student Resource:

- StudentUniquelid:
  - Field in KIDS:
    - D13: State Student Identifier
  - Required: Yes
- LastSurname:
  - Field in KIDS:
    - D4: Legal Last Name
  - Required: Yes
- FirstName:
  - Field in KIDS:
    - D5: Legal First Name
  - Required: Yes
- MiddleName:
  - Field in KIDS:
    - D6: Legal Middle Name
  - Required: No
- GenerationCodeSuffix:
  - Field in KIDS:

- D7: Generation Code
  - Required: No
- BirthSexDescriptor (SexDescriptor)
  - Field in KIDS:
    - D8: Gender
  - Required: No
  - Translation:
    - 0 = Female
    - 1 = Male
- BirthDate:
  - Field in KIDS:
    - D9: Date of Birth
  - Required: Yes
- BirthCountryDescriptor (CountryDescriptor)
  - Field in KIDS:
    - D56: Country of Birth
  - Required: No

### III. Staff Assignment Information

The staff assignment association records represent the staff's relationship to the institution (School in this instance) based on their assigned designations. The API enforces a claims designation when data for a staff is submitted to this resource – a relationship it applies in verifying and accepting other staff-related information.

#### StaffEducationOrganizationAssignmentAssociation

##### KIDS Collections submitted:

- BeginDate
  - Field in KIDS:
    - N/A
  - Required: Yes
- EducationOrganizationId
  - Field in KIDS:
    - D2: Accountability School Identifier
    - D15: Funding School Identifier
    - D16: Attendance School/Program Identifier
  - Required: Yes
- StaffClassificationDescriptor
  - Fields in KIDS:
    - N/A
  - Required: Yes

# IV. Enrollment Information

The enrollment information is held in a series of tables. The core (or base) Ed-Fi table is called the Student School Association with several extensions and other associations. This information describes where the student is being served and for what reason, the enrollment begin and end dates, and various characteristics that apply to the specific enrollment period (such as the grade level or the membership).

For records to be linked among the various core and extension tables, the Student USI and School number must match to collect the information.

For the 2025-2026 school year we are working to align our reporting with the Enrollment Domain - Best Practices - Ed-Fi Data Standard v4 - Ed-Fi Confluence guidance as we implement the KEDS System. The biggest change from this will be the change in definition of EntryDate in StudentSchoolAssociation. This field will no longer align with the KIDS Collection Field D18: School Entry Date. The EntryDate should now reflect the date the begin date of the relationship of the school, entrygradelevel, and student. A new field was created, Extension.SchoolEntryDate, to collect the information currently collected in the KIDS collection field D18: School Entry Date.

## StudentSchoolAssociation

### KIDS Collections submitted:

- StudentUniqueld
  - Field in KIDS:
    - D13: State Student Identifier
  - Required: Yes
- EntryDate
  - Field in KIDS:
    - D89: First Instructional Date
  - Required: Yes
- SchoolId
  - Fields in KIDS:
    - D2: Accountability School Identifier
    - D15: Funding School Identifier
    - D16: Attendance School/Program Identifier
  - Required: Yes
  - Translations:
    - A placeholder school identifier has been created to document these scenarios.
    - For Out-of-State students, the School Identifier is a combination of the District Identifier and “0001”
    - For Homeschool or Private students, the School Identifier combines the District Identifier and “0002”
    - For Juvenile Centers, the School Identifier combines the District Identifier and a “0003”

The table below shows a sample assignment of School Identifiers for the Kansas City District Schools as an example:

District Identifier is D0500 (State ID) or 145000000 (EducationOrganizationId)

School Type	School Name	Accountability School Identifier	Ed-Fi EducationOrganizationId
Regular School	West Park Elementary School	8409	145008409
Out-of-State	Kansas City - Out-of-State	D05000001	145000001
Juvenile (JDCs/PRTFs)	Kansas City - JDCs/PRTFs	D05000002	145000002
Homeschool or Private	Kansas City - Homeschool or Private	D05000003	145000003

- Attendance School submits enrollment records only if the Accountability School is an Out-of-State, Juvenile Center, or Homeschool.
- EntryGradeLevelDescriptor
  - Fields in KIDS:
    - D10: Current Grade Level
    - C9: Student's Current Grade Level
    - F9: Student's Current Grade Level
  - Required: Yes
- ExitWithdrawDate
  - Fields in KIDS:
    - D26: Exit/Withdrawal Date
  - Required: No
- ExitWithdrawTypeDescriptor
  - Fields in KIDS:
    - D27: Exit/Withdrawal Type
  - Required: No
- Extension.SchoolEntryDate
  - Field in KIDS
    - D18: School Entry Date
  - Required: Yes
- Extension.LocalEducationAgencyEntryDate
  - Fields in KIDS:
    - D19: District Entry Date
  - Required: Yes
- Extension.StateEntryDate
  - Fields in KIDS:
    - D20: State Entry Date
  - Required: Yes
- Extension.MembershipDays
  - Fields in KIDS:
    - D21: Cumulative Number of Days in Membership
  - Required: No
- Extension.MinutesEnrolled

- Fields in KIDS:
  - D24: Minutes Enrolled
- Required: No
- Extension.Qualifiedfor504Descriptor
  - Fields in KIDS:
    - D37: Qualified for 504
  - Required: No
- Extension.CTEContactMinutes
  - Fields in KIDS:
    - D47: Career and Technical Education Contact Minutes
  - Required: No
- Extension.IndividualPlanOfStudy
  - Fields in KIDS:
    - D88: Individual Plan of Study (IPS)
  - Required: No
- Extension.CreditsRequiredtoGraduate
  - Fields in KIDS:
    - D30: High School Credits Required to Graduate
  - Required: No

## V. Demographic Information

Similar to enrollment, the demographic information is also held in a series of tables. The core (or base) Ed-Fi table is called the Student Education Organization Association with several extensions and other associations. This information holds the student identifiers and student characteristics that are assigned within that education organization.

For records to be linked among the various core and extension tables, the Student USI and School number must match to collect the information. Some missing elements may default to generic values, if required, during the translation into KEDS.

### StudentEducationOrganizationAssociation

#### EdFi Fields submitted:

- EducationOrganizationId
  - Field in KIDS:
    - D2: Accountability School Identifier
    - D15: Funding School Identifier
    - D16: Attendance School/Program Identifier
  - Required: Yes
- StudentUniquelId
  - Field in KIDS:
    - D13: State Student Identifier
  - Required: Yes
- Address.AddressTypeDescriptor
  - Field in KIDS:
    - N/A
  - Required: Yes
  - Translation: Use **Home** as default value
- Address.StateAbbreviationDescriptor
  - Field in KIDS:
    - N/A
  - Required: Yes
  - Translation: If information is not available, use **KS** as default value
- Address.City:
  - Field in KIDS:
    - D52: Student's City
  - Required: Yes

- Address.PostalCode:
  - Field in KIDS:
    - D53: Student's Zip Code
  - Required: Yes
- Address.StreetNumberName:
  - Field in KIDS:
    - D51: Student's Street Address
  - Required: Yes
- HispanicLatinoEthnicity:
  - Field in KIDS:
    - D12: Hispanic Ethnicity
  - Required: Yes
- Language.LanguageDescriptor
  - Field in KIDS:
    - D43: First Language
  - Required: Yes
- Race.RaceDescriptor
  - Field in KIDS:
    - D33: Comprehensive Race
  - Required: Yes
- StudentCharacteristic.StudentCharacteristicDescriptor
  - Field in KIDS:
    - D36: Gifted Student Indicator
      - Only students with a Gifted Student Indicator = **GI** should be submitted.
      - StudentCharacteristicDescriptor Codevalue = **Gifted Student.**
    - D35: Primary Disability Indicator
      - Only students with a Primary Disability Indicator = **WD** should be submitted.
      - StudentCharacteristicDescriptor Codevalue = **IEP Student.**
    - D32: Special Circumstances Transfer Choice
      - Only students with a Special Circumstances Transfer Choice **values > 0** should be submitted.
      - StudentCharacteristicDescriptor Codevalue = **Special Circumstances Transfer Choice Student.**
    - D23: Truant Student
      - Only students with a Truant Student value of **1 (Yes)** should be submitted.
      - StudentCharacteristicDescriptor Codevalue = **Truant.**



- D25: Concurrent High School Enrollment
  - Only students with a Concurrent High School Enrollment **value of 1 (True)** should be submitted.
  - StudentCharacteristicDescriptor Codevalue = **Concurrent High School Enrolled Student.**
- D17: Virtual Education Student
  - Only students with a Virtual Education Student **value > 0** should be submitted.
  - For value 1 or 2, submit StudentCharacteristicDescriptor Codevalue = **Virtual Education Student.**
  - For value 4, submit StudentCharacteristicDescriptor Codevalue = Part-Time Virtual Education Student
- F17: Student is a Single Parent
  - Only students with a Student is a Single Parent value of **1 (Yes)** should be submitted.
  - StudentCharacteristicDescriptor Codevalue = **Single Parent.**
- D31: Dropout Diploma Completion Virtual Student
  - Only students with a Student is a Dropout Diploma Completion Virtual Student value of **1 (Yes)** should be submitted
  - StudentCharacteristicDescriptor Codevalue = **Dropout Diploma Completion Virtual Student**
- F16: Migrant Student
  - Only students with a Migrant Student value of **1 (Yes)** should be submitted
  - StudentCharacteristicDescriptor Codevalue = **Migrant**
- D90: Community Service Postsecondary Asset
  - Only students with a Community Service Postsecondary Asset value of **1 (Yes)** should be submitted
  - StudentCharacteristicDescriptor Codevalue = **40+ Hours Community Service Postsecondary Asset**
- D91: Two or More High School Athletics/Activities Postsecondary Asset
  - Only students with a Two or More High School Athletics/Activities Postsecondary Asset value of **1 (Yes)** should be submitted
  - StudentCharacteristicDescriptor Codevalue = **2+ High School Athletics or Activities Postsecondary Asset**
- D92: Junior ROTC Postsecondary Asset
  - Only students with a Junior ROTC Postsecondary Asset value of **1 (Yes)** should be submitted
  - StudentCharacteristicDescriptor Codevalue = **JROTC Postsecondary Asset**
- D93: Open Enrollment Student
  - Only students with an Open Enrollment value of **1 (Yes)** should be submitted
  - StudentCharacteristicDescriptor Codevalue = **Open Enrollment Student**
- D38: Dyslexia Indicator
  - Only students with an
  - StudentCharacteristicDescriptor Codevalue = **Student Indicated with Dyslexia**

- Required: Yes

- StudentIdentificationCode.StudentIdentificationCodes:
  - Field in KIDS:
    - D11: Local Student Identifier
    - D13: State Student Identifier
  - Required: Yes
- StudentIdentificationCode.StudentIdentificationSystemDescriptor
  - Field in KIDS:
    - N/A
  - Required: Yes
  - Translation:
    - For D11: Local Student Identifier, submit a value of ***District***.
    - For D13: State Student Identifier, submit a value of ***State***.
- StudentIdentificationCode.AssigningOrganizationIdentificationCode:
  - Field in KIDS:
    - N/A
  - Required: Yes
  - Translation:
    - Provide the 5-digit state district code.
- Extension.DistrictOfResidence:
  - Field in KIDS:
    - D3: Residence District Identifier
  - Required: No
  - Translation:
    - Submit the 5-digit state district code for the district if the submitting district is different from the student's district of residence.
    - Student who live in Kansas, but attend school in another state, should submit ***KS***.
    - Students who live out-of-state, but attend school in Kansas, should use the 2-letter State code for that State (e.g. NE for Nebraska).
- Extension.MilitaryConnectedStudentDescriptor
  - Field in KIDS:
    - D54: Military Connected Student Indicator
  - Required: No
  - Translation:
    - For value **1**, submit a Codevalue ***Active Duty***
    - For value **2**, submit a Codevalue ***National Guard Or Reserve***
- Extension.ImmigrantStudentDescriptor
  - Field in KIDS:
    - D55: Immigrant Student
  - Required: No
  - Translation:
    - For value **1**, submit a Codevalue ***Yes and receiving Title III Immigrant Services***
    - For value **2**, submit a Codevalue ***Yes but not receiving Title III Immigrant Services***
- Extension.NeglectedDelinquentStudentDescriptor
  - Field in KIDS:

- D57: Neglected/Delinquent Student
  - Required: No
  - Translation:
    - For value **5**, submit a Codevalue ***Neglected student***
    - For value **6**, submit a Codevalue ***Delinquent student***
- CTE.CTECertificationEarnedDescriptor
  - Field in KIDS:
    - F27: CTE Certification Earned
    - Required: No
- CTE.CertificationTermDescriptor
  - Field in KIDS:
    - F18: Term
  - Required: No
- CTE.CTECertificationDateEarned:
  - Field in KIDS:
    - F28: Date Earned
  - Required: No
- CTE.GraduationYear:
  - Field in KIDS:
    - F29: Graduation Year
  - Required: No
- KSAtRiskEligibilities.ksAtRiskEligibility Descriptor
  - Field in KIDS:
    - D40: Kansas At-Risk Program Participation
      - Report each of the items with a value of 1 (Yes) in KIDS
      - KSAtRiskEligibilityDescriptor
        - Not working on academic grade level
        - Not meeting req. for promotion/failing course
        - Not meeting req. for graduation from High School
        - Not meeting state standards
        - Has been retained
        - Has high rate of absenteeism
        - Has repeated suspensions or expulsions from school
        - Qualifies for homeless and/or migrant
        - Identified as an English Language Learner
        - Has needs that cause student to be unsuccessful
        - Identified as student with dyslexia
        - Foster care student or in custody
- PRAtRiskEligibilities.prAtRiskEligibilityDescriptor
  - Field in KIDS:
    - D58: Preschool-Aged At-Risk Program Participation
      - Report each of the items with a value of 1 (Yes) in KIDS
      - PRAtRiskEligibilityDescriptor

- Poverty, student qualifies for FREE meals
- Single Parent Family
- Kansas DCF Referral
- Teen Parent
- Either parent is lacking a HS diploma or GED
- Limited English Proficiency
- Delayed but not eligible for IEP
- Child qualifying for Migrant status
- Child experiencing homelessness
- Transportation.MilesTransported:
  - Field in KIDS:
    - D49: Miles Transported
  - Required: No
- Transportation.TransportationFTE:
  - Field in KIDS:
    - D50: Transportation FTE
  - Required: No

## VI. Responsibility Relationship Information

The responsibility relationship information between a student and an education organization is held in the StudentEducationOrganizationResponsibilityAssociation resource. KSDE uses this resource to define the responsibility category a school or district has with the student it is reporting data for. The following responsibilities are collected:

- Accountability
- Attendance
- Funding

Note that an education organization cannot submit this information for another education organization unless the submitting educational organization is a district and the relationship reported is for any set of schools within the district. A district cannot submit another district as its student's school or district of accountability, residence, attendance or funding.

This is a valid responsibility relationship representation for District **D0500** (145000000)

Begin Date	Education Organization	Responsibility Descriptor	Student State ID
07/01/2023	145008409	Accountability	000000001
07/01/2023	145008410	Attendance	000000001
07/01/2023	145000002	Funding	000000001

This is NOT a valid responsibility relationship representation for District **D0500** (145000000)

Begin Date	Education Organization	Responsibility Descriptor	Student State ID
07/01/2023	146008409 ( <i>different district's school</i> )	Accountability	000000001
07/01/2023	146000000 ( <i>different district</i> )	Attendance	000000001

## StudentEducationOrganizationResponsibilityAssociation

### EdFi Fields submitted:

- BeginDate
  - Field in KIDS:
    - D18: School Entry Date
  - Required: Yes
- EducationOrganization:

- Field in KIDS:
  - D2: Accountability School Identifier
  - D15: Funding School Identifier
  - D16: Attendance School/Program Identifier
- Required: Yes
- ResponsibilityDescriptor
  - Field in KIDS:
    - N/A
  - Required: Yes
  - Translation:
    - For Accountability School, submit Codevalue ***Accountability***
    - For Funding School, submit Codevalue ***Funding***
    - For Attendance School, submit Codevalue ***Attendance***
- StudentUniquelId:
  - Field in KIDS:
    - D13: State Student Identifier
  - Required: Yes
- EndDate:
  - Field in KIDS:
    - N/A
  - Required: No

## VII. Program Information

The various programs students may participate in are collected separately from the enrollment and demographic records in the Ed-Fi system.

Programs currently collected by KSDE in Ed-Fi.

- English as a Second Language (ESL)
- Homeless
- Student School Food Service
- Title I Part A
- Kansas Parents as Teachers Program
- Kansas Pre-K Pilot Program

### StudentLanguageInstructionProgramAssociation (English as a Second Language (ESL))

#### EdFi Fields submitted:

- BeginDate:
  - Field in KIDS:
    - D41: ESOL/Bilingual Program Entry Date
  - Required: Yes
- EducationOrganizationId:
  - Field in KIDS:
    - D2: Accountability School Identifier
    - D15: Funding School Identifier
    - D16: Attendance School/Program Identifier
  - Required: Yes
- ProgramEducationOrganizationId:
  - Field in KIDS:
    - D2: Accountability School Identifier
    - D15: Funding School Identifier
    - D16: Attendance School/Program Identifier
  - Required: Yes
- ProgramName:
  - Field in KIDS:
    - D44: ESOL/Bilingual Program Participation Code
  - Required: Yes
  - Translation:
    - When D44: ESOL/Bilingual Program Participation Code is available (**not null**), submit **English as a Second Language (ESL)** as value.

- ProgramTypeDescriptor
  - Field in KIDS:
    - D44: ESOL/Bilingual Program Participation Code
  - Required: Yes
  - Translation:
    - When D44: ESOL/Bilingual Program Participation Code is available, submit ***English as a Second Language (ESL)*** as codevalue.
- StudentUniqueld:
  - Field in KIDS:
    - D13: State Student Identifier
  - Required: Yes
- Dosage:
  - Field in KIDS:
    - D46: ESOL/Bilingual Student Contact Minutes
  - Required: No
- Extension.USInitialSchoolEntryDate:
  - Field in KIDS:
    - D42: First Entry Date into a School in the United States
  - Required: No
- Extension.FundingSourceDescriptor
  - Field in KIDS:
    - D44: ESOL/Bilingual Program Participation Code
  - Required: No
- Extension.LanguageInstructionProgramTypeDescriptor
  - Field in KIDS:
    - D45: Language Instruction Education Program Type
  - Required: No

## StudentHomelessProgramAssociation (Homeless)

### EdFi Fields submitted:

- BeginDate:
  - Field in KIDS:
    - D18: School Entry Date
  - Required: Yes



- Translation:
    - Use valid program entry date if available.
    - If valid program entry date is not available, use D18: School Entry Date.
- EducationOrganizationId:
  - Field in KIDS:
    - D2: Accountability School Identifier
    - D15: Funding School Identifier
    - D16: Attendance School/Program Identifier
  - Required: Yes
- ProgramEducationOrganizationId:
  - Field in KIDS:
    - D2: Accountability School Identifier
    - D15: Funding School Identifier
    - D16: Attendance School/Program Identifier
  - Required: Yes
- ProgramName:
  - Field in KIDS:
    - D39: Residence of Homeless Student while Homeless
  - Required: Yes
  - Translation:
    - When D39: Residence of Homeless Student while Homeless **value > 0**, submit ***Homeless*** as value.
- ProgramTypeDescriptor
  - Field in KIDS:
    - D39: Residence of Homeless Student while Homeless
  - Required: Yes
  - Translation:
    - When D39: Residence of Homeless Student while Homeless **value > 0**, submit ***Homeless*** as codevalue.
- StudentUniqueId:
  - Field in KIDS:
    - D13: State Student Identifier
  - Required: Yes
- HomelessPrimaryNighttimeResidenceDescriptor
  - Field in KIDS:
    - D39: Residence of Homeless Student while Homeless
  - Required: No
  - Translation:

- When value is **1 or 6**, submit **Doubled-up** as codevalue.
- When value is **2 or 7**, submit **Hotels/motels** as codevalue.
- When value is **4 or 8**, submit **Unsheltered** as codevalue.
- When value is **5 or 9**, submit **Shelters** as codevalue.
- HomelessUnaccompaniedYouth:
  - Field in KIDS:
    - D39: Residence of Homeless Student while Homeless
  - Required: No
  - Translation:
    - When value is **1, 2, 4 or 5**, submit **1 (True)** as value.
    - When value is **6, 7, 8 or 9**, submit **0 (False)** as value.

## StudentSchoolFoodServiceProgramAssociation (Student School Food Service)

### EdFi Fields submitted:

- BeginDate:
  - Field in KIDS:
    - D18: School Entry Date
  - Required: Yes
  - Translation:
    - Use valid program entry date if available.
    - If valid program entry date is not available, use D18: School Entry Date.
- EducationOrganizationId:
  - Field in KIDS:
    - D2: Accountability School Identifier
    - D15: Funding School Identifier
    - D16: Attendance School/Program Identifier
  - Required: Yes
- ProgramEducationOrganizationId:
  - Field in KIDS:
    - D2: Accountability School Identifier
    - D15: Funding School Identifier
    - D16: Attendance School/Program Identifier
  - Required: Yes
- ProgramName:
  - Field in KIDS:
    - D34: Eligibility for National School Lunch Program and/or at-risk funding
  - Required: Yes
  - Translation:
    - When D34: Eligibility for National School Lunch Program and/or at-risk funding value > 0, submit **Student School Food Service** as value

- ProgramTypeDescriptor
  - Field in KIDS:
    - D34: Eligibility for National School Lunch Program and/or at-risk funding
  - Required: Yes
  - Translation:
    - When D34: Eligibility for National School Lunch Program and/or at-risk funding value > 0, submit ***Student School Food Service*** as codevalue
- StudentUniqueld
  - Field in KIDS:
    - D13: State Student Identifier
  - Required: Yes
- SchoolFoodServiceProgramService. SchoolFoodServiceProgramServiceDescriptor
  - Field in KIDS:
    - D34: Eligibility for National School Lunch Program and/or at-risk funding
  - Required: Yes
  - Translation:
    - When value is **1**, submit ***Reduced Price Lunch – Direct Certification*** as codevalue.
    - When value is **2**, submit ***Free Lunch - Direct Certification*** as codevalue.
    - When value is **3**, submit ***Reduced Price Lunch – Household Economic Survey*** as codevalue.
    - When value is **4**, submit ***Free Lunch - Household Economic Survey*** as codevalue.

## Title I Part A

### EdFi Fields submitted:

- BeginDate
  - Field in KIDS:
    - D18: School Entry Date
  - Required: Yes
  - Translation:
    - Use valid program entry date if available.
    - If valid program entry date is not available, use D18: School Entry Date.
- EducationOrganizationId
  - Field in KIDS:
    - D2: Accountability School Identifier
    - D15: Funding School Identifier

- D16: Attendance School/Program Identifier
  - Required: Yes
- ProgramEducationOrganizationId
  - Field in KIDS:
    - D2: Accountability School Identifier
    - D15: Funding School Identifier
    - D16: Attendance School/Program Identifier
  - Required: Yes
- ProgramName
  - Field in KIDS:
    - D48: Title I Participation
  - Required: Yes
  - Translation:
    - When D48: Title I Participation **value > 0**, submit ***Title I Part A*** as value.
- ProgramTypeDescriptor
  - Field in KIDS:
    - D48: Title I Participation
  - Required: Yes
  - Translation:
    - When D48: Title I Participation **value > 0**, submit ***Title I Part A*** as codevalue.
- StudentUniqueid
  - Field in KIDS:
    - D13: State Student Identifier
  - Required: Yes
- TitleIPartAParticipantDescriptor
  - Field in KIDS:
    - D48: Title I Participation
  - Required: Yes
  - Translation:
    - When value is **1**, then submit ***Public Schoolwide Program*** as codevalue.
    - When value is **2**, then submit ***Public Targeted Assistance Program*** as codevalue.
    - When value is **3**, then submit ***Private school students participating*** as codevalue.

## Kansas Parents as Teachers Program

### EdFi Fields submitted:

- BeginDate
  - Field in KIDS:
    - D18: School Entry Date
  - Required: Yes
  - Translation:
    - Use valid program entry date if available.
    - If valid program entry date is not available, use D18: School Entry Date.
- EducationOrganizationId
  - Field in KIDS:
    - D2: Accountability School Identifier
    - D15: Funding School Identifier
    - D16: Attendance School/Program Identifier
  - Required: Yes
- ProgramEducationOrganizationId
  - Field in KIDS:
    - D2: Accountability School Identifier
    - D15: Funding School Identifier
    - D16: Attendance School/Program Identifier
  - Required: Yes
- ProgramName
  - Field in KIDS:
    - D60: Kansas Parents as Teachers Program (KPAT)
  - Required: Yes
  - Translation:
    - When D60: Kansas Parents as Teachers Program (KPAT) **value is 1 (True)**, submit ***Kansas Parents as Teachers Program*** as value.
- ProgramTypeDescriptor
  - Field in KIDS:
    - D60: Kansas Parents as Teachers Program (KPAT)
  - Required: Yes
  - Translation:
    - When D60: Kansas Parents as Teachers Program (KPAT) **value is 1 (True)**, submit ***Kansas Parents as Teachers Program*** as value.
- StudentUniqueId
  - Field in KIDS:
    - D13: State Student Identifier
  - Required: Yes

## Kansas Pre-K Pilot Program

### Ed-Fi Fields submitted:

- BeginDate
  - Field in KIDS:
    - D18: School Entry Date
  - Required: Yes
  - Translation:
    - Use valid program entry date if available.
    - If valid program entry date is not available, use D18: School Entry Date.
- EducationOrganizationId
  - Field in KIDS:
    - D2: Accountability School Identifier
    - D15: Funding School Identifier
    - D16: Attendance School/Program Identifier
  - Required: Yes
- ProgramEducationOrganizationId
  - Field in KIDS:
    - D2: Accountability School Identifier
    - D15: Funding School Identifier
    - D16: Attendance School/Program Identifier
  - Required: Yes
- ProgramName
  - Field in KIDS:
    - D59: Kansas Pre-K Pilot Program (KPP)
  - Required: Yes
  - Translation:
    - When D59: Kansas Pre-K Pilot Program (KPP) **value is 1 (True)**, submit **Kansas Pre-K Pilot Program** as value.
- ProgramTypeDescriptor
  - Field in KIDS:
    - D59: Kansas Pre-K Pilot Program (KPP)
  - Required: Yes
  - Translation:
    - When D59: Kansas Pre-K Pilot Program (KPP) **value is 1 (True)**, submit **Kansas Pre-K Pilot Program** as value.
- StudentUniqueId
  - Field in KIDS:
    - D13: State Student Identifier
  - Required: Yes

## VIII. Student Attendance Information

This event entity represents the recording of whether a student is in attendance for a school day.

### StudentSchoolAttendanceEvents

#### Ed-Fi Fields submitted:

- AttendanceEventCategoryDescriptor
  - Definition: A code describing the attendance event, for example: present, unexcused absence, excused absence, or tardy.
  - Field in KIDS:
    - N/A
  - Required: Yes
  - Valid Values:
    - In Attendance
    - Excused Absence
    - Unexcused Absence
- eventDate
  - Definition: Date for this attendance event.
  - Field in KIDS:
    - N/A
  - Required: Yes
- schoolID
  - Field in KIDS:
    - D2: Accountability School Identifier
    - D16: Attendance School/Program Identifier
  - Required: Yes
- SchoolYear
  - Field in KIDS:
    - D14: Current School Year
  - Required: Yes
- sessionName
  - Field in KIDS:
    - N/A
  - Required: Yes
- studentUniqueID
  - Field in KIDS:
    - D13: State Student Identifier
  - Required: Yes
- eventDuration
  - Definition: The amount of time for the event as recognized by the school: 1 day = 1, ½ day = 0.5.
  - Field in KIDS:
    - N/A
  - Required: Yes
  - Valid Values:

- Full Attendance value = 1.00
- Half Attendance = 0.50

## IX. Session and Grading Period Information

The Session and Grading Period information is required for districts and/or schools that need to report student course enrollments and grades. These are typically in KIDS as part of the KCAN and TASC collections. The Session resource is required as a prerequisite for the Course Offering resource and the Grading Period resource is required by the Grade resource in Ed-Fi.

### AcademicWeek (Resource is optional)

#### Ed-Fi Fields submitted:

- SchoolID
  - Field in KIDS:
    - N/A
  - Required: Yes
- WeekIdentifier
  - Field in KIDS:
    - N/A
  - Required: Yes
- BeginDate
  - Field in KIDS:
    - N/A
  - Required: Yes
- EndDate
  - Field in KIDS:
    - N/A
  - Required: Yes
- TotalInstructionalDays
  - Field in KIDS:
    - N/A
  - Required: Yes

### Session

The Session resource in Ed-Fi is used for defining a school's terms, and its date ranges as well as total instructional days for each term reported.

#### Ed-Fi Fields submitted:

- School
  - Field in KIDS:
    - C2: Student's School Identifier



- F2: Student's School Identifier
  - Required: Yes
- SchoolYear
  - Field in KIDS:
    - C13: School Year
    - F13: School Year
  - Required: Yes
- SessionName
  - Field in KIDS:
    - N/A
  - Required: Yes
  - Translation:
    - Session name is a string that represents any of these time periods:
      - Yearlong: **2024 School Year** representing 2023-24 School Year
      - Semester/Trimester: **2024 First Semester** representing 2023-24 First Semester.
      - Quarter: **2024 Quarter 4** representing 2023-24 Fourth Quarter
- BeginDate
  - Field in KIDS:
    - N/A
  - Required: Yes
  - Translation:
    - Provide valid start date of the session defined
- EndDate
  - Field in KIDS:
    - N/A
  - Required: Yes
  - Translation:
    - Provide valid end date of the session defined
- TermDescriptor
  - Field in KIDS:
    - F18: Term
  - Required: Yes
- TotalInstructionalDays
  - Field in KIDS:
    - N/A
  - Required: Yes
  - Translation:
    - Provide valid total instructional days within the session defined

## Grading Period

The Grading Period resource in Ed-Fi is used for defining a school's grading periods, sequence information, as well as date ranges and total instructional days for each grading period reported.

### EdFi Fields submitted:

- GradingPeriodDescriptor
  - Field in KIDS:
    - N/A
  - Required: Yes
  - Translation:
    - Provide valid grading periods
- PeriodSequence
  - Field in KIDS:
    - N/A
  - Required: Yes
  - Translation:
    - For each grading period, provide the numerical sequence where necessary. An example is PeriodSequence for *First Nine Weeks* can be 1 while *Second Nine Weeks* is 2.
- SchoolId
  - Field in KIDS:
    - C2: Student's School Identifier
    - F2: Student's School Identifier
  - Required: Yes
- SchoolYear
  - Field in KIDS:
    - C13: School Year
    - F13: School Year
  - Required: Yes
- BeginDate
  - Field in KIDS:
    - N/A
  - Required: Yes
  - Translation:
    - Provide valid start date for defined grading period
- EndDate
  - Field in KIDS:
    - N/A
  - Required: Yes
  - Translation:
    - Provide valid end date for defined grading period
- TotalInstructionalDays
  - Field in KIDS:
    - N/A
  - Required: Yes
  - Translation:
    - Provide valid total number of instructional days within the defined grading period

## X. Course, Course Offering, Section, Student Section Association, and Grade Information

This section addresses how all the course-related resources collected by KSDE are translated into Ed-Fi. This section will primarily address most of the fields collected as part of the TASC and KCAN KIDS collections.

Resources in this section include:

- CourseOffering
  - CourseOfferingCourseLevelCharacteristic
  - CourseOfferingCourseOfferedGradeLevel
  - CourseOfferingExtension
- Section
  - StudentSectionAssociation
  - StudentSectionAssociationExtension
  - StaffSectionAssociation
  - SectionEducator
- Grade
  - GradeExtension

### State Courses

The State will also pre-load and maintain their state-level course catalog of courses in the Course resource. This is to enable schools to be able to submit CourseOffering records which are intended to hold the relationship between a local course and its state course equivalent where such exists. The CourseCode field for state courses is a combination of the State Subject Area Code and the State Course Identifier.

When submitting CourseOffering data, districts should populate *LocalCourseCode* with the school's Local Course Identifier and the *CourseCode* with the state *CourseCode*. The Course reference required in the CourseOffering resource includes the CourseCode and the EducationOrganizationId. For mapping, these values can be found in the **2024-25 KSDE EdFi ODS API Descriptors** document at <https://kedx.ksde.org> on the Vendors tab.

### KCC Identifier

The KCC Identifier has 10 sections that each correspond to specific course attributes that are provided with each course. In Ed-Fi, the KCC Identifier is not submitted in its current KIDS specification format, but each of these fields are collected separately as part of the CourseOffering resource. The table below shows a summary of the translation of how these are intended to be submitted in Ed-Fi:

KCC Identifier Field Sample	KCC Identifier Section	Course Resource Field
02	State Subject Area Code	CourseCode (State)
052	State Course Identifier	
G	Course Level	CourseOffering.CourseLevelCharacteristics
0.50	Credits	CourseOffering.CourseCredits
1	Sequence	CourseOffering.CourseSequence
2	Sequence Total	CourseOffering.TotalCourseSequence
09	Grade Level (course)	CourseOffering.CourseOfferedGradeLevel
G	Targeted Program	CourseOffering.CourseProgramTypeDescriptor
G	Delivery Type	CourseOffering.CourseDeliveryTypeDescriptor
N	College/Career	CourseOffering.CollegeCareerTypeDescriptor

### StaffSectionAssociation vs SectionEducator

The StaffSectionAssociation and the SectionEducator resources are used for capturing the Educator relationship to the course section enrollment details provided as part of the TASC collection. The StaffSectionAssociation resource requires a valid Educator Identifier to be associated with the section record. When an Educator does not have a valid Educator Identifier, a default value of 9999999999 is submitted in KIDS. In Ed-Fi however, the association should be submitted to the SectionEducator resource – which captures the email address and name of the educators, as well as their section association. A section association record for a section with an educator who has a valid Educator Identifier should not be submitted to the SectionEducator resource. In the same manner, a section association with a staff member who does not have a valid Educator Identifier should not be submitted to the StaffSectionAssociation resource.

## CourseOffering

*Note: Course offerings submitted by the district should reference pre-populated state course catalog courses.*

### EdFi Fields submitted:

- LocalCourseCode
  - Field in KIDS:
    - C17: Local Course ID
    - F21: Local Course ID
  - Required: Yes
- SchoolId
  - Field in KIDS:
    - C2: Student's School Identifier
    - F2: Student's School Identifier
  - Required: Yes
- CourseCode: *(this should align with the course codes on the pre-loaded state courses)*

- Field in KIDS:
  - F19: KCC Identifier
- Required: Yes
- Translation:
  - Submit the combination of **State Subject Area Code** and **State Course Identifier** value for the state-level course in KCCMS.
- EducationOrganizationId
  - Field in KIDS:
    - N/A
  - Required: Yes
  - Translation:
    - Submit the State EducationOrganizationId value: 100000000
- SchoolYear: *(this should align with school year defined for the session for which course is taken)*
  - Field in KIDS:
    - C13: School Year
    - F13: School Year
  - Required: Yes
- SessionName: *(this should align with session name defined for the session for which course is taken)*
  - Field in KIDS:
    - N/A
  - Required: Yes
  - Translation:
    - Session name is a string that represents any of these time periods:
      - Yearlong: **2024 School Year** representing 2023-24 School Year
      - Semester/Trimester: **2024 First Semester** representing 2023-24 First Semester.
      - Quarter: **2024 Quarter 4** representing 2023-24 Fourth Quarter
- Extension.CourseCredits
  - Field in KIDS:
    - F19: KCC Identifier
  - Required: No
  - Translation:
    - Submit the **Credits** value for the local course in KCCMS.
- Extension.CourseSequence
  - Field in KIDS:
    - F19: KCC Identifier
  - Required: No
  - Translation:
    - Submit the **Sequence** value for the local course in KCCMS.
- Extension.TotalCourseSequence

- Field in KIDS:
  - F19: KCC Identifier
- Required: No
- Translation:
  - Submit the **Sequence Total** value for the local course in KCCMS.
- Extension.CourseDeliveryTypeDescriptor
  - Field in KIDS:
    - F19: KCC Identifier
  - Required: No
  - Translation:
    - Submit the **Delivery Type** value for the local course in KCCMS.
- Extension.CourseProgramTypeDescriptor
  - Field in KIDS:
    - F19: KCC Identifier
  - Required: No
  - Translation:
    - Submit the **Targeted Program** value for the local course in KCCMS.
- Extension.CollegeCareerTypeDescriptor
  - Field in KIDS:
    - F19: KCC Identifier
  - Required: No
  - Translation:
    - Submit the **College/Career** value for the local course in KCCMS.
- CourseLevelCharacteristicDescriptor
  - Field in KIDS:
    - F19: KCC Identifier
  - Required: Yes
  - Translation:
    - Submit the **Course Level** value for the local course in KCCMS.
- GradeLevelDescriptor:
  - Field in KIDS:
    - F19: KCC Identifier
  - Required: Yes
  - Translation:
    - Submit the **Grade Level (course)** value for the local course in KCCMS.

## Section

### EdFi Fields submitted:

- LocalCourseCode
  - Field in KIDS:
    - C17: Local Course ID
    - F21: Local Course ID
  - Required: Yes

- SchoolId
  - Field in KIDS:
    - C2: Student's School Identifier
    - F2: Student's School Identifier
  - Required: Yes
- SchoolYear
  - Field in KIDS:
    - C13: School Year
    - F13: School Year
  - Required: Yes
- SectionIdentifier
  - Field in KIDS:
    - F20: Course Section
  - Required: Yes
  - Translation:
    - Submit only valid Course Section values.
    - Do not submit Course Section values for ***Certificate*** or ***MigrantServices***.
- SessionName
  - Field in KIDS:
    - N/A
  - Required: Yes
  - Translation:
    - Session name is a string that represents any of these time periods:
      - Yearlong: ***2024 School Year*** representing 2023-24 School Year.
      - Semester/Trimester: ***2024 First Semester*** representing 2023-24 First Semester.
      - Quarter: ***2024 Quarter 4*** representing 2023-24 Fourth Quarter.

## StudentSectionAssociation

### EdFi Fields submitted:

- BeginDate:
  - Field in KIDS:
    - N/A
  - Required: Yes
  - Translation:
    - Provide valid start date for a student's enrollment in a course.
- LocalCourseCode:
  - Field in KIDS:
    - C17: Local Course ID
    - F21: Local Course ID
  - Required: Yes
- SchoolId:
  - Field in KIDS:
    - C2: Student's School Identifier
    - F2: Student's School Identifier
  - Required: Yes
- SchoolYear:
  - Field in KIDS:
    - C13: School Year
    - F13: School Year
  - Required: Yes
- SectionIdentifier:
  - Field in KIDS:
    - F20: Course Section
  - Required: Yes
  - Translation:
    - Submit only valid Course Section values.
    - Do not submit Course Section values for ***Certificate*** or ***MigrantServices***.
- SessionName:
  - Field in KIDS:
    - N/A
  - Required: Yes
  - Translation:
    - Session name is a string that represents any of these time periods:
      - Yearlong: ***2024 School Year*** representing 2023-24 School Year
      - Semester/Trimester: ***2024 First Semester*** representing 2023-24 First Semester.
      - Quarter: ***2024 Quarter 4*** representing 2023-24 Fourth Quarter
- StudentUniquelId:
  - Field in KIDS:



- C12: State Student Identifier
    - F12: State Student Identifier
  - Required: Yes
- EndDate
  - Field in KIDS:
    - N/A
  - Required: No
  - Translation:
    - Provide valid end date when the student ends enrollment in a course.
- CourseStatusDescriptor
  - Field in KIDS:
    - C18: Course Status
    - F22: Course Status
  - Required: Yes

## StaffSectionAssociation

### EdFi Fields submitted:

- BeginDate:
  - Field in KIDS:
    - N/A
  - Required: Yes
  - Translation:
    - Provide valid start date for student's enrollment in course.
- LocalCourseCode:
  - Field in KIDS:
    - C17: Local Course ID
    - F21: Local Course ID
  - Required: Yes
- SchoolId:
  - Field in KIDS:
    - C2: Student's School Identifier
    - F2: Student's School Identifier
  - Required: Yes
- SchoolYear:
  - Field in KIDS:
    - C13: School Year
    - F13: School Year
  - Required: Yes
- SectionIdentifier:
  - Field in KIDS:
    - F20: Course Section
  - Required: Yes

- Translation:
  - Submit only valid Course Section values.
  - Do not submit Course Section values for ***Certificate*** or ***MigrantServices***.
- SessionName:
  - Field in KIDS:
    - N/A
  - Required: Yes
  - Translation:
    - Session name is a string that represents any of these time periods:
      - Yearlong: **2024 School Year** representing 2023-24 School Year
      - Semester/Trimester: **2024 First Semester** representing 2023-24 First Semester.
      - Quarter: **2024 Quarter 4** representing 2023-24 Fourth Quarter
- StaffUniquelId:
  - Field in KIDS:
    - C19: Educator Identifier
  - Required: Yes
  - Translation:
    - Submit only valid state-assigned Educator ID
- ClassroomPositionDescriptor
  - Field in KIDS:
    - N/A
  - Required: Yes
  - Translation:
    - Submit ***Teacher of Record*** as codevalue.

## SectionEducator

This resource is set up for submission of TASC staff section association records for Educators who have not been assigned a State Educator ID.

### EdFi Fields submitted:

- LocalCourseCode:
  - Field in KIDS:
    - C17: Local Course ID
    - F21: Local Course ID
  - Required: Yes
- SchoolId:
  - Field in KIDS:
    - C2: Student's School Identifier
    - F2: Student's School Identifier

- Required: Yes
- SchoolYear:
  - Field in KIDS:
    - C13: School Year
    - F13: School Year
  - Required: Yes
- SectionIdentifier:
  - Field in KIDS:
    - F20: Course Section
  - Required: Yes
  - Translation:
    - Submit only valid Course Section values.
    - Do not submit Course Section values for ***Certificate*** or ***MigrantServices***.
- SessionName:
  - Field in KIDS:
    - N/A
  - Required: Yes
  - Translation:
    - Session name is a string that represents any of these time periods:
      - Yearlong: ***2024 School Year*** representing 2023-24 School Year
      - Semester/Trimester: ***2024 First Semester*** representing 2023-24 First Semester.
      - Quarter: ***2024 Quarter 4*** representing 2023-24 Fourth Quarter
- EducatorElectronicMailAddress:
  - Field in KIDS:
    - C23: Educator’s District Email Address
  - Required: Yes
- EducatorFirstName:
  - Field in KIDS:
    - C21: Educator’s First Name
  - Required: Yes
- EducatorMiddleName:
  - Field in KIDS:
    - C22: Educator’s Middle Name
  - Required: No
- EducatorLastSurname:
  - Field in KIDS:
    - C20: Educator’s Last Name
  - Required: Yes

## Grade

### EdFi Fields submitted:

- BeginDate
  - Field in KIDS:
    - N/A
  - Required: Yes
  - Translation:
    - Provide valid start date for student's enrollment in course.
- LocalCourseCode
  - Field in KIDS:
    - C17: Local Course ID
    - F21: Local Course ID
  - Required: Yes
- SchoolId
  - Field in KIDS:
    - C2: Student's School Identifier
    - F2: Student's School Identifier
  - Required: Yes
- SchoolYear
  - Field in KIDS:
    - C13: School Year
    - F13: School Year
  - Required: Yes
- GradingPeriodSchoolYear
  - Field in KIDS:
    - C13: School Year
    - F13: School Year
  - Required: Yes
- SectionIdentifier
  - Field in KIDS:
    - F20: Course Section
  - Required: Yes
  - Translation:
    - Submit only valid Course Section values.
    - Do not submit Course Section values for ***Certificate*** or ***MigrantServices***.
- SessionName
  - Field in KIDS:
    - N/A
  - Required: Yes
  - Translation:
    - Session name is a string that represents any of these time periods:

- Yearlong: **2024 School Year** representing 2023-24 School Year
  - Semester/Trimester: **2024 First Semester** representing 2023-24 First Semester.
  - Quarter: **2024 Quarter 4** representing 2023-24 Fourth Quarter
- StudentUniqueId
  - Field in KIDS:
    - C12: State Student Identifier
    - F12: State Student Identifier
  - Required: Yes
- GradingPeriodSequence
  - Field in KIDS:
    - N/A
  - Required: Yes
  - Translation:
    - For each grading period, provide the numerical sequence where necessary. An example is PeriodSequence for *First Nine Weeks* can be 1 while *Second Nine Weeks* is 2.
- GradeTypeDescriptor
  - Field in KIDS:
    - N/A
  - Required: Yes
  - Translation:
    - Provide valid grade type codevalue for grade reported.
- GradingPeriodDescriptor
  - Field in KIDS:
    - N/A
  - Required: Yes
  - Translation:
    - Provide valid grading period for grade reported
- LetterGradeEarned
  - Field in KIDS:
    - F23: Letter Grade
  - Required: No
- NumericGradeEarned
  - Field in KIDS:
    - F24: Numeric Grade
  - Required: Yes
- Extension.WorkBasedLearning
  - Field in KIDS:
    - F25: Work-based Learning

- Required: No
- CollegeCreditEarned
  - Field in KIDS:
    - F26: College Credits Earned
  - Required: No
- InstructionalMinutesCompleted
  - Field in KIDS:
    - F32: Instructional Minutes Completed
  - Required: No

## XI. Assessment Information

This section addresses how all the assessment-related resources collected by KSDE are translated into Ed-Fi. This section will primarily address most of the fields collected as part of the EOYA and TEST KIDS collections.

Resources in this section include:

- Assessment
- ObjectiveAssessment
- StudentAssessment

The state will provide and maintain the Assessment and Objective Assessment resources to ensure that the assessment resources are consistently managed. Vendors and districts are expected to align all **Assessment** and **Objective Assessment** references to the values provided by the state.

### Assessment

Current assessments submitted:

AssessmentIdentifier	Namespace	AssessmentTitle
<b>Animal Systems Assessment</b>	uri://ksde.org/Assessment/Assessment.xml	Animal Systems Assessment
<b>Comprehensive Agriculture Assessment</b>	uri://ksde.org/Assessment/Assessment.xml	Comprehensive Agriculture Assessment
<b>Dyslexia Screener_Acadience</b>	uri://ksde.org/Assessment/Assessment.xml	Dyslexia Screener - Acadience
<b>Dyslexia Screener_AIMSPlus</b>	uri://ksde.org/Assessment/Assessment.xml	Dyslexia Screener - AIMSPlus
<b>Dyslexia Screener_easyCBM</b>	uri://ksde.org/Assessment/Assessment.xml	Dyslexia Screener - easyCBM
<b>Dyslexia Screener_FASTBridge</b>	uri://ksde.org/Assessment/Assessment.xml	Dyslexia Screener - FASTBridge
<b>Dyslexia Screener_iReady</b>	uri://ksde.org/Assessment/Assessment.xml	Dyslexia Screener - iReady
<b>Dyslexia Screener_KS Alternate Screener</b>	uri://ksde.org/Assessment/Assessment.xml	Dyslexia Screener – KS Alternate Screener
<b>Dyslexia Screener_Other</b>	uri://ksde.org/Assessment/Assessment.xml	Dyslexia Screener - Other (Meets Rubric Requirements)
<b>Dyslexia Screener_Renaissance Star</b>	uri://ksde.org/Assessment/Assessment.xml	Dyslexia Screener – Renaissance Star
<b>Kansas English Language Proficiency Assessment (KELPA)</b>	uri://ksde.org/Assessment/Assessment.xml	Kansas English Language Proficiency Assessment (KELPA)
<b>Plant Systems Assessment</b>	uri://ksde.org/Assessment/Assessment.xml	Plant Systems Assessment
<b>State English Language Arts Assessment</b>	uri://ksde.org/Assessment/Assessment.xml	State English Language Arts Assessment
<b>State History/Gov Assessment</b>	uri://ksde.org/Assessment/Assessment.xml	State History/Gov Assessment

<b>State Mathematics Assessment</b>	uri://ksde.org/Assessment/Assessment.xml	State Mathematics Assessment
<b>State Science Assessment</b>	uri://ksde.org/Assessment/Assessment.xml	State Science Assessment

## ObjectiveAssessment

### EdFi Fields submitted:

- AssessmentIdentifier:
  - Field in KIDS:
    - D59: Dyslexia Screener
    - D78: History/Gov Claim/Thesis Score
    - D79: History/Gov Evidence Score
    - D80: History/Gov Reasoning Score
  - Required: Yes
  - Translation:
    - Submit AssessmentIdentifier values as provided in the Assessment section
- Namespace:
  - Field in KIDS:
    - N/A
  - Required: Yes
  - Translation:
    - Submit Namespace default value ***uri://ksde.org/Assessment/Assessment.xml***
- IdentificationCode:
  - Field in KIDS:
    - D60: Dyslexia Subtest
    - D78: History/Gov Claim/Thesis Score
    - D79: History/Gov Evidence Score
    - D80: History/Gov Reasoning Score
  - Required: Yes
  - Translation:
    - For all Dyslexia Screener assessments, any of the following identification codes is required:
      - Oral Reading Fluency
      - Phoneme Segmentation Fluency
      - Nonsense Word Fluency
      - Reading Comprehension
    - For all State History/Gov assessments, any of these identification codes is required:
      - Evidence
      - Reasoning
      - Claim/Thesis



## StudentAssessment

### EdFi Fields submitted:

- AssessmentIdentifier:
  - Field in KIDS:
    - D61: Dyslexia Screener
    - D75: State Mathematics Assessment
    - D76: State English Language Arts – ELA Assessment
    - D77: State Science Assessment
    - D78: History/Gov Claim/Thesis Score
    - D79: History/Gov Evidence Score
    - D80: History/Gov Reasoning Score
    - D81: Comprehensive Agriculture Assessment
    - D82: Animal Systems Assessment
    - D83: Plant Systems Assessment
    - D84: Kansas English Language Proficiency Assessment (KELPA)
  - Required: Yes
  - Translation:
    - Submit AssessmentIdentifier values as provided in the Assessment section
- Namespace:
  - Field in KIDS:
    - N/A
  - Required: Yes
  - Translation:
    - Submit Namespace default value ***uri://ksde.org/Assessment/Assessment.xml***
- StudentAssessmentIdentifier:
  - Field in KIDS:
    - D61: Dyslexia Screener
    - D75: State Mathematics Assessment
    - D76: State English Language Arts – ELA Assessment
    - D77: State Science Assessment
    - D78: History/Gov Claim/Thesis Score
    - D79: History/Gov Evidence Score
    - D80: History/Gov Reasoning Score
    - D81: Comprehensive Agriculture Assessment
    - D82: Animal Systems Assessment
    - D83: Plant Systems Assessment
    - D84: Kansas English Language Proficiency Assessment (KELPA)
  - Required: Yes
  - Translation:

- Build the string value by concatenating Assessment with the Student State Identifier and the School Year. Sample for each assessment is shown below for student 00000001:
    - D61: Dyslexia Screener
      - Dyslexia\_00000001\_2024
    - D78, D79, D80: State History/Gov Assessment
      - HistoryGovAssessment\_00000001\_2024
    - D82: Animal Systems Assessment
      - AnimalSystemsAssessment\_00000001\_2024
    - D81: Comprehensive Agriculture Assessment
      - ComprehensiveAgricultureAssessment\_00000001\_2024
    - D77: State Science Assessment
      - StateScienceAssessment\_00000001\_2024
    - D76: State English Language Arts – ELA Assessment
      - StateELAAssessment\_00000001\_2024
    - D75: State Mathematics Assessment
      - StateMathematicsAssessment\_00000001\_2024
    - D83: Plant Systems Assessment
      - PlantSystemsAssessment\_00000001\_2024
    - D84: Kansas English Language Proficiency Assessment (KELPA)
      - KELPA\_00000001\_2024
- StudentUniqueId:
  - Field in KIDS:
    - D13: State Student Identifier
  - Required: Yes
- AdministrationDate:
  - Field in KIDS:
    - N/A
  - Required: Yes
  - Translation:
    - Submit valid Administration Date for Assessment
    - If unknown, submit 07/01/2023 as default value
- Extension.ProctorIdentifier:
  - Field in KIDS:
    - D85: KELPA Proctor ID
  - Required: No
  - Translation:
    - Submit state Educator ID for KELPA Assessments
- Extension.AssessmentRequestDescriptor:
  - Field in KIDS:
    - D84: Kansas English Language Proficiency Assessment (KELPA)

- D82: Animal Systems Assessment
- D81: Comprehensive Agriculture Assessment
- D77: State Science Assessment
- D76: State English Language Arts – ELA Assessment
- D75: State Mathematics Assessment
- D83: Plant Systems Assessment
- Required: No
- Translation:
  - For D84: Kansas English Language Proficiency Assessment (KELPA)

KIDS Value	Descriptor Codevalue
<b>0</b>	No test in this content area
<b>1</b>	KELPA for current ESOL students only
<b>2</b>	KELPA for ESOL program eligible student
<b>C</b>	Clear test subject indicator

- D82: Animal Systems Assessment

KIDS Value	Descriptor Codevalue
<b>0</b>	No test in this content area
<b>1</b>	Yes test in this content area
<b>C</b>	Clear test subject indicator

- D81: Comprehensive Agriculture Assessment

KIDS Value	Descriptor Codevalue
<b>0</b>	No test in this content area
<b>1</b>	Yes test in this content area
<b>2</b>	COMPAGRIC - Test in Power, Structural, and Tech
<b>5</b>	COMPAGRIC - No Test in Power, Structural, and Tech
<b>C</b>	Clear test subject indicator

- D77: State Science Assessment

KIDS Value	Descriptor Codevalue
<b>0</b>	No test in this content area
<b>2</b>	Yes test in this content area
<b>Z</b>	Full-time virtual student
<b>C</b>	Clear test subject indicator

- D76: State English Language Arts – ELA Assessment

KIDS Value	Descriptor Codevalue
<b>0</b>	No test in this content area
<b>2</b>	Yes test in this content area
<b>Z</b>	Full-time virtual student
<b>C</b>	Clear test subject indicator

- D75: State Mathematics Assessment

KIDS Value	Descriptor Codevalue
0	No test in this content area
2	Yes test in this content area
Z	Full-time virtual student
C	Clear test subject indicator

- D83: Plant Systems Assessment

KIDS Value	Descriptor Codevalue
0	No test in this content area
1	Yes test in this content area
2	PLANTSYSTEMS - Test in Horticulture Module
5	PLANTSYSTEMS - No Test in Horticulture Module
C	Clear test subject indicator

- IdentificationCode:
  - Field in KIDS:
    - D62: Dyslexia Subtest
    - D78: History/Gov Claim/Thesis Score
    - D79: History/Gov Evidence Score
    - D80: History/Gov Reasoning Score
  - Required: Yes
  - Translation:
    - For all Dyslexia Screener assessments, any of the following identification code values is required:
      - Oral Reading Fluency
      - Phoneme Segmentation Fluency
      - Nonsense Word Fluency
      - Reading Comprehension
    - For all State History/Gov assessments, any of these identification codes is required:
      - Evidence
      - Reasoning
      - Claim/Thesis
- AssessmentReportingMethodDescriptor:
  - Field in KIDS:
    - N/A
  - Required: Yes
  - Translation:
    - Submit default codevalue: ***Achievement/proficiency level***

- PerformanceLevelDescriptor:
  - Field in KIDS:
    - D63: Dyslexia Spring Benchmark Performance Level
    - D78: History/Gov Claim/Thesis Score
    - D79: History/Gov Evidence Score
    - D80: History/Gov Reasoning Score

- Required: Yes

- Translation:

- For Dyslexia:

KIDS Value	Descriptor Codevalue
00	Not assessed
01	Below Benchmark
02	At or Above Benchmark
11	Accuracy Below, Rate Below Benchmark
12	Accuracy Below, Rate at or Above Benchmark
21	Accuracy at or Above, Rate Below Benchmark
22	Accuracy at or Above, Rate at or Above Benchmark

- For History/Gov Assessment:

KIDS Value	Descriptor Codevalue
00	Not assessed
01	Performance Level 1
02	Performance Level 2
03	Performance Level 3
04	Performance Level 4
05	Student refused to test
06	Student exempt from testing

## XII. Student Academic Record

This educational entity represents the cumulative record of academic achievement for a student. This should be submitted for any high school credit earned by a student. Any information not marked as required for this resource, does not need to have information submitted in the field.

### StudentAcademicRecord

#### Ed-Fi Fields submitted:

- termDescriptor
  - Definition: The term for the session during the school year.
  - Field in KIDS:
    - N/A
  - Required: Yes
- educationOrganizationId
  - Field in KIDS:
    - N/A
  - Required: Yes
- SchoolYear
  - Field in KIDS:
    - D14: Current School Year
  - Required: Yes
- studentUniqueID
  - Field in KIDS:
    - D13: State Student Identifier
  - Required: Yes
- academicHonors
  - Field in KIDS:
    - N/A
  - Required: No
- classRanking
  - Field in KIDS:
    - N/A
  - Required: No
- cumulativeAttemptedCreditConversion
  - Field in KIDS:
    - N/A
  - Required: No
- cumulativeAttemptedCredits
  - Field in KIDS:
    - N/A
  - Required: No
- cumulativeAttemptedCreditTypeDescriptor
  - Field in KIDS:
    - N/A

- Required: No
- cumulativeEarnedCreditConversion
  - Field in KIDS:
    - N/A
  - Required: No
- cumulativeEarnedCredits
  - Definition: The value of credits or units of value awarded for the completion of a course.
  - Field in KIDS:
    - D29: High School Credits Earned
  - Required: Yes
- cumulativeEarnedCreditTypeDescriptor
  - Definition: The type of credits or units of value awarded for the completion of a course.
  - Field in KIDS:
    - N/A
  - Required: Yes
- cumulativeGradePointAverage
  - Definition: A measure of average performance in all courses taken by an individual during his or her school career as determined for record-keeping purposes. This is obtained by dividing the total grade points received by the total number of credits attempted. This usually includes grade points received, and credits attempted in his or her current school as well as those transferred from schools in which the individual was previously enrolled.
  - Field in KIDS:
    - D28: Unweighted Grade Point Average (GPA)
  - Required: Yes
- cumulativeGradePointsEarned
  - Field in KIDS:
    - N/A
  - Required: No
- diplomas
  - Field in KIDS:
    - N/A
  - Required: No
- gradePointAverages
  - Field in KIDS:
    - N/A
  - Required: No
- gradeValueQualifier
  - Field in KIDS:
    - N/A
  - Required: No
- projectedGraduationDate
  - Field in KIDS:
    - N/A
  - Required: No
- recognitions

- Field in KIDS:
    - N/A
  - Required: No
- reportCards
  - Field in KIDS:
    - N/A
  - Required: No
- sessionAttemptedCreditConversion
  - Field in KIDS:
    - N/A
  - Required: No
- sessionAttemptedCredits
  - Field in KIDS:
    - N/A
  - Required: No
- sessionAttemptedCreditTypeDescriptor
  - Field in KIDS:
    - N/A
  - Required: No
- sessionEarnedCreditConversion
  - Field in KIDS:
    - N/A
  - Required: No
- sessionEarnedCredits
  - Field in KIDS:
    - N/A
  - Required: No
- sessionEarnedCreditTypeDescriptor
  - Field in KIDS:
    - N/A
  - Required: No
- sessionGradePointAverage
  - Field in KIDS:
    - N/A
  - Required: No
- sessionGradePointsEarned
  - Field in KIDS:
    - N/A
  - Required: No